

# PARTS LIST



## C-DIT 400 SPREADER

400 CLUTCH DRIVE



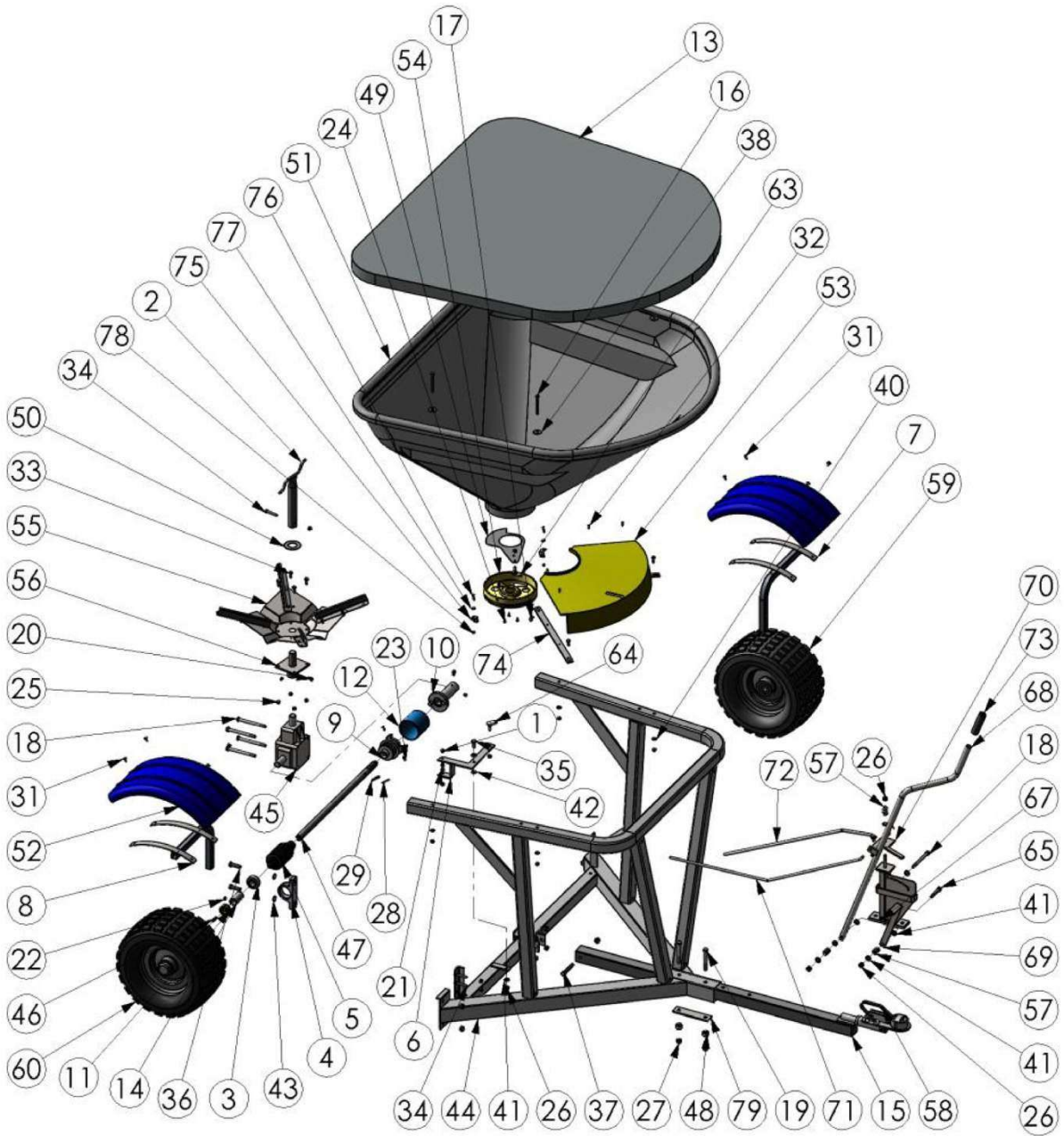
**P** 0800 853 002  
**E** [info@yelo-agri.com](mailto:info@yelo-agri.com)  
**W** [www.yelo-agri.com](http://www.yelo-agri.com)

### PARTS & SUPPORT

For parts and service support, contact your authorised Yelo store or visit our website for store locations. If you need further assistance, we are only a phone call or email away. Parts list included.



## EXPLODED PARTS DIAGRAM – C-DIT 400 CLUTCH DRIVE



Mudguard kit is an optional extra – part no: 1300-6810

## PARTS LIST – C-DIT 400 CLUTCH DRIVE

Item No.	QTY	Part No	Description
3	1	1140-1200	Bearing-Ball-Pillow Block-Drive Axle-Spreaders
4	1	1140-4000	Bearing-Housing-Pillow Block-Drive Axle-Spreaders
5	1	1280-1600	Boot-Clutch-Convolute-CDIT300/400-Rubber
6	1	1300-3010	Bracket-Clutch Engager-CDIT300/400GT-ZP
7	1	1300-6800	Bracket-Mudguard-CDIT300/400/MM165-LH-GL
8	1	1300-6801	Bracket-Mudguard-CDIT300/400/MM165-RH-GL
9	1	2100-2300	Clutch-Engager-CDIT400-ZP
10	1	2100-6000	Clutch-Pin Engager-CDIT300/400-ZP
11	1	2150-0025	Collar-Shaft-ID25-ZP
12	1	2250-1600	Cover-Clutch-CDIT300/400-OD 90x90 Long-Grey-PVC
13	1	2250-4104	Cover-Hopper-Silver Fabric-Spreader 400/CDIT400
14	1	2250-7900	Cover-Shaft-Drive Axle-60mm Long-CDIT400GT-PVC
15	1	2550-1400	Drawbar-CDIT400GT-GL
16	4	2810-0880	Fastener-Bolt&Nut-Hex-304 Grade-M8x80-Stainless
17	2	2840-0816	Fastener-Bolt&Nut-Hex-8.8 Grade-M8x16-ZP
18	5	2840-1120	Fastener-Bolt&Nut-Hex-8.8 Grade-M10x120-ZP
19	2	2840-1290	Fastener-Bolt&Nut-Hex-8.8 Grade-M12x90-ZP
20	2	2890-0812	Fastener-Cap Head-Allen-Screw-12.9 Grade-M8x12-Black
21	2	2890-0816	Fastener-Cap Head-Allen-Screw-12.9 Grade-M8x16-Black
22	3	3010-0810	Fastener-Grub Screw-Socket Head-M8x10-Stainless
23	3	3100-0512	Fastener-Machine-Screw-Pan-M5x12-Phillips-ZP
24	3	3110-0512	Fastener-Machine-Screw-Pan-M5x12-Pozi-ZP
25	19	3170-0008	Fastener-Nut-Nyloc-M8-ZP

26	8	3170-0010	Fastener-Nut-Nyloc-M10-ZP
27	5	3170-0012	Fastener-Nut-Nyloc-M12-ZP
28	1	3210-0540	Fastener-Pin-Roll-M5x40-Black
29	1	3210-0840	Fastener-Pin-Roll-M8x40-BK
30	2	3220-0320	Fastener-Pin-Split-M3.2x20-ZP
31	8	3240-0015	Fastener-Rivet-Blind-Truss Head-3/16x15mm-Aluminium
32	4	3240-5100	Fastener-Rivet-Blind-Truss Head-5x5/8"-Stainless
33	6	3290-0820	Fastener-Set Screw-Hex-8.8 Grade-M8x20-ZP
34	5	3290-0850	Fastener-Set Screw-Hex-8.8 Grade-M8x50-ZP
35	1	3290-1025	Fastener-Set Screw-Hex-8.8 Grade-M10x25-ZP
36	2	3290-1240	Fastener-Set Screw-Hex-8.8 Grade-M12x40-ZP
37	1	3290-1275	Fastener-Set Screw-Hex-8.8 Grade-M12x75-ZP
38	4	3310-2810	Fastener-Washer-Flat-M10x32x2.5-Grade 316-Stainless
39	1	3310-5021	Fastener-Washer-Flat-M20x39x3-Axle-ZP
40	4	3310-6008	Fastener-Washer-Flat-M8-ZP
41	11	3310-6010	Fastener-Washer-Flat-M10-ZP
42	1	3310-6010	Fastener-Washer-Flat-M10-ZP
43	2	3310-6012	Fastener-Washer-Flat-M12-ZP
44	1	3500-5705	Frame-Spreader-CDIT400/Spreader 400-GL
45	1	3800-1000	Gearbox-Ferroni-RV10-Ratio 1 to 2.78
46	1	5200-6300	Machined-Key-8x8-Ground Drive Spreaders
47	1	5200-6600	Machined-Shaft-Axle-CDIT400GT-ZP
48	2	5200-9200	Machined-Bush-Round-25 ODX14 Longx12 ID-ZP
49	1	6500-7770	Profiled-Shutter-CDIT300/400
50	1	6500-9000	Profiled-Washer-Spinner Shaft-34.9x67x2mm-Stainless 304
51	1	7500-2161	Rota-Hopper-Spreader-CDIT400 SC -Yellow-MDPE

52	2	7500-2590	Rota-Mudguard-MDPE-1/4 Circle
53	1	7500-2690	Rota-Shroud-Spreader CDIT400GT-Yellow-MDPE-180 Degrees
54	1	7500-2830	Rota-Spout-Spreader-CDIT400GT-Yellow-MDPE
55	1	8200-1010	Spinner Assembly-Spreader-CDIT300/400-STAINLESS
56	1	8200-5200	Spinner-Mount-CDIT300/400/INEX300-ZP
57	3	8250-1800	Spring-Compression-Crinkle Plate-ZP
58	1	8800-3800	Tow-Coupling-Handle-Double Ended-1 7/8" x 50mm-ZP
59	1	9200-4500	Wheel-Knobbly-Bearing-18x950x8
60	1	9200-4600	Wheel-Knobbly-Keyed-18x950x8
61	1	3310-5012	Fastener-Washer-Flat-Heavy-M12x32x3-Galv
62	1	3290-1225	Fastener-Set Screw-Hex-8.8 Grade-M12x25-ZP
63	1	1110-2308	Ball-End-Internal Thread-M8-Zinc Plated
64	1	1110-2310	Ball-End-Internal Thread-M10-Zinc Plated
65	1	2840-1065	Fastener-Bolt-Hex-8.8 Grade-M10x65-ZP
66	1	3290-0616	Fastener-Set Screw-Hex-8.8 Grade-M6x16-ZP
67	1	5245-3900	Mount-Handle-CDIT300/400GT-ZP
68	1	4050-1500	Handle-CDIT300/400-ZP
69	1	4050-4250	Handle-Indicator-CDIT400GT-ZP
70	1	3990-3900	Guide-Handle-CDIT300/400GT-ZP
71	1	5050-7980	Linkage-Shutter-CDIT400GT-ZP
72	1	5050-1600	Linkage-Clutch-CDIT300/400GT-ZP
73	1	3865-3800	Grip-Handle-7/8"-PVC-Black-Plastic
74	2	5245-8015	Mount-Shroud-CDIT400/Spreader 400-ZP
75	2	1300-5200	Bracket-Lock-Hose Reel-ZP
76	2	3290-0620	Fastener-Set Screw-Hex-8.8 Grade-M6x20-ZP
77	2	3310-6006	Fastener-Washer-Flat-M6-ZP

78	2	3170-0006	Fastener-Nut-Nyloc-M6-ZP
79	1	1300-8550	Bracket-Transit Plate-CDIT400-ZP