

# OWNER'S MANUAL



## C-DIT 165 SPREADER



**P** 0800 853 002  
**E** [info@yelo-agri.com](mailto:info@yelo-agri.com)  
**W** [www.yelo-agri.com](http://www.yelo-agri.com)

### PARTS & SUPPORT

For parts and service support, contact your authorised Yelo store or visit our website for store locations. If you need further assistance, we are only a phone call or email away. Parts list included.



## YOUR SAFETY IS RGL's PRIMARY CONCERN

- It is important that you understand that any loads or attachments whether fastened to or placed on a vehicle or ATV will alter the stability and handling characteristics of that vehicle or ATV.
- **FAILURE TO FOLLOW THESE RULES CAN RESULT TO SEVERE INJURY OR DEATH TO OPERATORS OR BYSTANDERS.**
- We take this opportunity to remind you about the simple, basic and common sense rules of safety when using spray tanks or other equipment.
- **NEVER EXCEED THE LOAD LIMIT CAPACITY OF THE ATV OR OTHER VEHICLE.**
- **Spreader Hoppers or other equipment must be filled to a level where the gross weight is within the load limit of the ATV or other vehicle.**
- **ALWAYS EXERCISE EXTREME CAUTION WHEN OPERATING EQUIPMENT, ESPECIALLY ON UNDULATING TERRAIN.**
- **Operators MUST BE AWARE that they have a responsibility to ensure that anyone using this equipment is familiar with the manufacturers safe operating instructions.**
- **PLEASE BE CAREFUL!**

### SAFETY PRECAUTIONS

Before attempting to install or operate the equipment, read and understand the manual thoroughly. Failure to comply with this instruction constitutes improper use and will invalidate the warranty.

Throughout this manual there are highlighted text boxes containing warnings, cautions and notes.

**Warnings** are mandatory instructions to prevent serious injury or permanent damage.

**Cautions** are advisory instructions to ensure reliable operation of the equipment.

**Notes** are for convenient operation

Do not overload your spreader. The maximum permissible payload is 130 Kg. (3 bags of Urea)

Never use dirty product or product with stones or lumps.

Ensure that your towing vehicle is adequate for the task. The maximum tare weight is 190 Kg.

If using the spreader over hilly terrain the payload should be reduced to ensure that the spreader stability is not compromised.

Never allow anyone to ride on the spreader.

Keep the spreader in good condition. Cleanliness and maintenance are essential for safe and trouble free operation.

Never leave product in the hopper or store the spreader without cleaning it.

# Yelo C-DIT 165 Spreader

## OWNER'S MANUAL

(Pt.No.2400-6945)

### TABLE OF CONTENTS

2	<b>Safety Precautions</b>
3	<b>Table of Contents</b>
4	<b>Description</b>
	Specifications
	Order Information
5	<b>Warranty</b>
6	<b>Operation</b>
	<b>Calibration</b>
7	<b>Operating the Spreader</b>
	Adjusting the Spread Pattern
	Fitting the Rain Cover
8	<b>Maintenance</b>
	Before Use
	After Each Use or Daily when in Use
	<b>Hints</b>
9	<b>Parts Diagram</b>
10	<b>Parts List</b>

## DESCRIPTION

The Yelo C-Dit 165 is a ground-driven spreader designed for application of pelleted fertilisers. It can also be used for application of other products such as grass seed and magnesium oxide. The uniquely designed 165-litre translucent non-corrosive polyethylene hopper is specially profiled for good product flow and ease of filling. A high-quality stainless steel agitator and shutter ensures even flow of product to the spinner. A unique spinner design ensures wide, even spread of product over 180 degrees (Urea). The heavy-duty galvanised frame is fitted with chunky turf tyres as standard. The drive train uses high quality steel and a double sealed self-aligning bearing and heavy-duty gearbox for maximum durability. The drive can be disconnected using a convenient pin clutch. The dual control levers allow instant setting of product feed rate and product control.

### Specifications

(Specifications subject to change without notice)

Dry Weight	75 Kg
Dimensions	W1340mm, H1260mm, L1400mm
Capacity	165 litre (130Kg Urea or 100mg Magnesium Oxide)
Drive	Ground driven (single wheel)
Wheels	18x750x8 Chunky turf tyres
Tyre Pressure	12 PSI
Clutch	Removable Pin
Control	Adjustable stainless steel slide with index handle
Agitator	Mechanical arm, stainless steel
Spinner	Galvanised steel with three-position adjustable vanes
Hopper	Non-corrosive polyethylene, ergonomically designed for ease of filling and inspection
Hopper Cover	Lightweight polypropylene fabric
Frame	Galvanised steel
Gearbox	Heavy duty with double sealed bearings
Gearbox oil	300ml SAE30
Axle Bearings	Sealed ball races
Axle grease	General Purpose
Application Rate	100Kg per hectare @ 10 kph (nominal, Urea)
Spread width	12M (nominal, Urea @ 15 Kph)
Towing speed	15 Kph (Maximum recommended)

### Order Information

Yelo C-Dit  
Spreader 165                      part number: 3012

## WARRANTY

### 1      **WARRANTY AND LIABILITY**

#### **Use of the equipment**

- 1.1 You must satisfy yourself as to the suitability of the equipment for your intended use(s) of the equipment.

#### **Your relationship with the retailer**

- 1.2 Where you consider you have a warranty claim (or any other claim) in relation to the equipment, you must contact the retailer who sold you the equipment, not RGL directly. The retailer is responsible for liaising with RGL in respect of your claim.

#### **Warranty**

- 1.3 RGL warrants to the original purchaser that the equipment is sold free from defects in materials and workmanship for a period of 12 months from date of first retail sale subject to the terms set out below.

- 1.4 RGL will at its option repair or replace the defective equipment (or part of the equipment) or notify the retailer of the equipment to refund the purchase price for such defective equipment to you in the event of a breach of this warranty, subject to the terms set out below.

## **Liability**

- 1.5 Except for the warranty set out in clause 1.2 above, all warranties and representations (including those expressed or implied by law) in respect of the equipment or advice relating to the equipment provided to you by RGL are excluded to the extent permitted by law.
- 1.6 Notwithstanding anything else in this manual, RGL's maximum liability to you (in the event that such liability exists) in respect of any breach of warranty, any matter set out in this manual, or for defective equipment or advice relating to the equipment provided is limited at RGL's option to:
- (a) repairing or replacing the equipment (or part of the equipment); or
  - (b) notifying the retailer of the equipment to refund the price for the equipment paid by you.
- 1.7 Notwithstanding anything else in this manual, in no event will RGL be liable, whether in contract, tort (including negligence) or otherwise:
- (a) where you have altered or modified the equipment, misused or misapplied the equipment, or the equipment has been subjected to any unusual, excessive or non-recommended use, service or handling (including as set out in this manual);
  - (b) where the equipment is not transported, stored, handled or used in accordance with any directions given by RGL (or the retailer) to you (including as set out in this manual);
  - (c) where the equipment:
    - (i) has been subject to neglect, accident or hireage, or the damage arises from fair wear and tear, battery damage or chemical attack;
    - (ii) has been built to a customer's specifications; or
    - (iii) has been dismantled, repaired or serviced other than by an authorised service agent of RGL;
  - (d) for loss or damage caused by any factors beyond RGL's control; or
  - (e) for any loss of profit or revenue, or for any special, indirect, incidental or consequential damage, loss or injury of any kind suffered by you.
- 1.8 Where RGL elects to repair or replace the equipment it will use reasonable endeavours to do so as soon as practicable but will not be liable for any delay in doing so.
- 1.9 You agree that the transactions entered into between you and the retailer (and RGL) are for the purposes of trade and that, having regard to all relevant circumstances of the transactions, it is fair and reasonable that the provisions of the Consumer Guarantees Act 1993 (NZ) do not apply to those transactions to the fullest extent permitted by law.

## OPERATION

The product to be spread is placed in the hopper. When the spreader is towed forward, the right hand wheel drives through the pin clutch and gearbox to turn the spinner in a clockwise direction. When the shutter handle is pulled forward, the shutter at the bottom of the hopper rotates to an open position. The size of the opening is set by a shutter stop lever, which locates into one of nine pre-set positions.

An extension of the spinner boss is connected to a stainless steel agitator arm inside the bottom of the hopper. The agitator ensures that product flows continuously out of the hopper to the spinning disk.

A delivery chute on the bottom of the hopper ensures that product is delivered to the correct spot of the disk so that the deflectors distribute the product over a wide angle behind and to each side of the spreader.

The drive from the wheel to the gearbox may be disengaged by removing a pin from the axle. The pin may then be stowed by inserting it into a holder on the side of the frame.

A fabric hopper cover with an elastic band sewn into the outer edge to grip the lip of the hopper can be fitted to prevent rain and debris from entering the hopper.

### **Urea application rate guide (kg/ha)**

Flow Plate Setting	Speed 10kph, track spacing 10m	Speed 15kph, track spacing 15m
1	5	2
2	15	10
3	30	15
4	65	30
5	100	50

### **C-Dit 165L Nominal application rates (grams/m<sup>2</sup>) for Magnesium Oxide spread at 10Kph**

	Adjustment Stop Pin	Application Rate (g/m <sup>2</sup> )
Low	1	0.6
	2	1.5
	3	2.5
	4	4.5
High	5	8.2

## CALIBRATION

Check the application rate using the following formula:

$$\text{Rate (Kg/ha)} = \frac{\text{Product applied (Kg)} \times 10,000}{\text{Distance travelled (metres)} \times \text{spread width (metres)}}$$

Adjust either the Shutter Stop Lever or the speed of travel until the desired application rate is achieved.

### **NOTE**

Because of variations in product characteristics, speedometer calibration and driving speed, the information in the calibration guide should be regarded as a starting point only. It is recommended that the spreader be calibrated before use.

## OPERATING THE SPREADER

When the spreader has been correctly calibrated, the hopper may be filled to the required level and spreading commenced.

To reduce agitator damage to product and to ensure that product is not forced past the agitator shaft when towing the spreader to the area to be treated, the drive to the gearbox should be disconnected by removing the pin from the drive axle until spreading is to be commenced. The pin can be stowed by inserting it through a receptacle provided on the right hand side of the hopper frame.

### WARNING

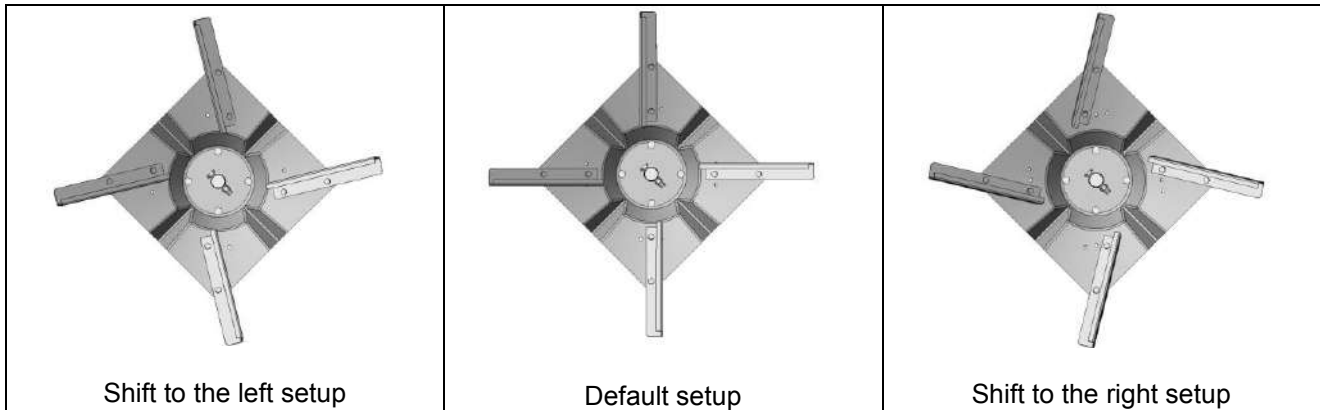
To prevent damage to the spreader do not tow the spreader at speeds in excess of 15 Kph.

To prevent inadvertent operation of the shutter while the spreader is in transit it is recommended that the Shutter Stop Lever be moved to Position 1 to lock the shutter closed.

To prevent the shutter from vibrating closed when the spreader is operated over rough ground, the Shutter Control Handle friction may be increased by tightening the adjustment nut at the bottom of the Handle.

### Adjusting the Spread Pattern

The spreader has been set up for spreading pelletised fertiliser. When spreading lighter products or products with a high powder content it may be necessary to adjust the deflectors on the spinner to centralise the spread pattern. To shift the pattern to the left (facing forward) the inside end of the vanes should be moved anti-clockwise. To shift the pattern to the right (facing forward) the inside end of the vanes should be adjusted clockwise. These positions are highlighted in the diagram on the following page.



### **Fitting the Rain Cover**

The rain cover is permanently fitted via an aluminium bracket mounted on the back of the spreader. To fit the rain cover to the hopper, pull the cover over the top of the spreader and pull the (bungee) cord down over the lugs mounted on the frame.

## **MAINTENANCE**

The following maintenance actions are mandatory for reliable use of the spreader.

### **Before Use**

Check the tyre pressures and charge with air as required. The correct pressure is 12 psi. (80 Kpa)

Remove the gearbox drive pin and turn the spinner by hand to ensure that it is free to turn without interference.

Check for any loose fasteners and tighten as required

Check the hopper to ensure that no debris is inside.

If the spreader has not been used for some time, grease the bearings (pay particular attention to the pin clutch bearing).

Check the gearbox for leaks. If leaks are detected it will be necessary to drain and replenish the gearbox with 300ml of SAE 30 oil.

### **CAUTION**

To replenish the gearbox the spreader may be inverted to place the filler plug uppermost. However in doing so extreme care must be taken to prevent damage to the spinner and deflectors.

### **After Each Use or Daily when in Use**

Remove all traces of product from the spreader by brushing or washing. Pay particular attention to areas where product has accumulated and built up. Remove by scraping if necessary taking care not to damage the surface finish of the spreader or its components.

### **If washing do not direct high-pressure water onto the gearbox, axle or wheel bearing seals.**

After washing, grease the bearings (three places) and apply water displacing fluid such as WD 40 or LPS3 to all metal parts.

Check for damaged or worn components and replace as required.

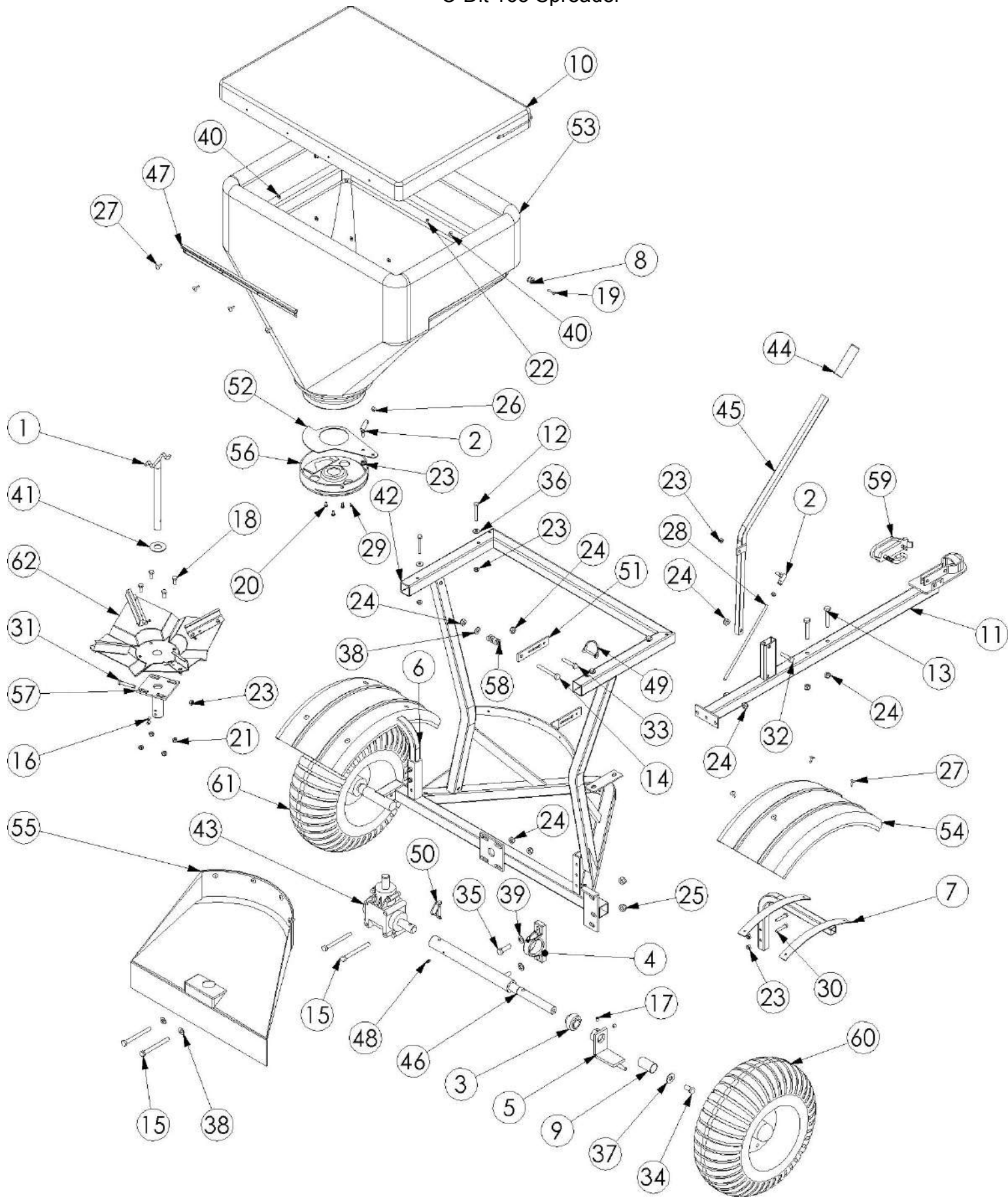
## **HINTS**

When greasing the pin clutch bearing in the axle assembly, leave the pin in place. This will assist the grease to fully enter the scroll in the axle and prevent the axle from being displaced if the bearing housing should be over pressurised with grease.

If the drive axle is removed from the axle housing for any reason care must be taken to ensure that both the axle scroll and bronze bush are clean and free of debris before reassembly.

To remove the agitator from the hopper knock out the roll pin or remove the bolt, which attaches the agitator shaft to the spinner flange assembly then withdraw the agitator from inside the hopper.

EXPLODED PARTS DIAGRAM  
C-Dit 165 Spreader



**PARTS LIST**  
**Magmaster 165**

Item No.	QTY.	Part no	Description
1	1	1036-8223	Agitator-Spreader-165L/Magmaster 165-SS
2	2	1110-2308	Ball-End-Internal Thread-M8-Zinc Plated
3	1	1140-1200	Bearing-Ball-Pillow Block-Drive Axle-Spreaders
4	1	1140-4000	Bearing-Housing-Pillow Block-Drive Axle-Spreaders
5	1	1300-4100	Bracket-Drive-130L/MAG/165L-Spreaders-ZP
6	1	1300-6800	Bracket-Mudguard-CDIT300/400/MM165-LH-GL
7	1	1300-6801	Bracket-Mudguard-CDIT300/400/MM165-RH-GL
8	2	1455-8800	Button-Ute Cover-Bungy Cord Retain-Black-Plastic
9	1	2250-1000	Cover-Axle Shaft-Spreader 130L/165L/Magmaster-PVC
10	1	2250-4150	Cover-Hopper-Silver Fabric-Spreader130/165
11	1	2550-8203	Drawbar-Spreader 165L/Magmaster 165-GL
12	4	2810-0860	Fastener-Bolt&Nut-Hex-304 Grade-M8x60-Stainless
13	2	2840-1065	Fastener-Bolt-Hex-8.8 Grade-M10x65-ZP
14	1	2840-1080	Fastener-Bolt&Nut-Hex-8.8 Grade-M10x80-ZP
15	4	2840-1110	Fastener-Bolt&Nut-Hex-8.8 Grade-M10x110-ZP
16	2	3010-0810	Fastener-Grub Screw-Socket Head-M8x10-Stainless
17	2	3010-5200	Fastener-Grub Screw-Socket Head-3/8x3/8-Stainless
18	4	3075-0820	Fastener-Set-Screw-Hex-304 Grade-M8x20-Stainless
19	2	3090-0200	Fastener-Machine-Screw-3/16"x1"-Slot-Stainless
20	3	3110-0512	Fastener-Machine-Screw-Pan-M5x12-Pozi-ZP
21	4	3130-0108	Fastener-Nut-Nyloc-M8-Stainless Steel
22	2	3160-5101	Fastener-Nut-Nyloc-3/16 UNC-Stainless
23	11	3170-0008	Fastener-Nut-Nyloc-M8-ZP
24	9	3170-0010	Fastener-Nut-Nyloc-M10-ZP
25	2	3170-0012	Fastener-Nut-Nyloc-M12-ZP
26	2	3180-0008	Fastener-Nut-Plain-M8-ZP
27	16	3240-0018	Fastener-Rivet-Blind-Truss Head-3/16x18mm-Aluminium
28	1	7400-8100	Rod-Threaded-165 Linkage-ZP
29	2	3270-8012	Fastener-Self Tap-Screw-CSK-8Gx1/2"-Pozi-Stainless
30	4	3290-0840	Fastener-Set Screw-Hex-8.8 Grade-M8x40-ZP
31	1	3290-0850	Fastener-Set Screw-Hex-8.8 Grade-M8x50-ZP
32	1	3290-1040	Fastener-Set Screw-Hex-8.8 Grade-M10x40-ZP
33	1	3290-1050	Fastener-Set Screw-Hex-8.8 Grade-M10x50-ZP
34	1	3290-1225	Fastener-Set Screw-Hex-8.8 Grade-M12x25-ZP
35	2	3290-1240	Fastener-Set Screw-Hex-8.8 Grade-M12x40-ZP
36	4	3310-2809	Fastener-Washer-Flat-M8x22x1.5-Grade 316-Stainless
37	1	3310-5012	Fastener-Washer-Flat-Heavy-M12x32x3-Galv
38	3	3310-6010	Fastener-Washer-Flat-M10-ZP
39	2	3310-6012	Fastener-Washer-Flat-M12-ZP
40	6	3310-9200	Fastener-Washer-Flat-3/16"x1/2"x1.5-Grade 304-Stainless
41	1	3310-9750	Fastener-Washer-Flat-23.5x2"x1.5-Grade 304-Stainless
42	1	3500-5305	Frame-Spreader-MM/In-Ex 165L-GL
43	1	3800-2000	Gearbox-Ferroni-RV12-2-6-Ratio 1 to 3.25
44	1	3865-3800	Grip-Handle-7/8"-PVC-Black-Plastic
45	1	4050-8105	Handle-Spreader 165L/Mag 165-ZP

46	1	5200-6700	Machined-Axle-Gearbox Drive-Magmaster-Black
47	1	5245-4010	Mount-Hopper Cover-Spreader 130L/165L/Magmaster 165-AL
48	1	5270-0003	Nipple-Grease-Straight-Short-M6-ZP
49	1	6100-4820	Pin-Locking-6x50mm-ZP
50	1	6100-4840	Pin-Locking-8x45mm-Snapon Pipe-ZPG
51	1	6500-4201	Profiled-Index-Plate-MAG/130L/165L Spreader-ZP
52	1	6500-7770	Profiled-Shutter-CDIT300/400
53	1	7500-2185	Rota-Hopper-Spreader-Magmaster 165L-Yellow-MDPE
54	2	7500-2590	Rota-Mudguard-Blue-MDPE-1/4 Circle
55	1	7500-2705	Rota-Shroud-Spreader Magmaster 165L-Yellow-MDPE
56	1	7500-2830	Rota-Spout-Spreader-CDIT400GT-Yellow-MDPE
57	1	8200-5305	Spinner-Mount-Spreader 165L/Magmaster 165-ZP
58	1	8250-1800	Spring-Compression-Crinkle Plate-ZP
59	1	8800-3800	Tow-Coupling-Handle-Double Ended-1 7/8" x 50mm-ZP
60	1	9200-8610	Wheel-Turf- DRILLED-DRIVE -18x750x8-Tubeless
61	1	9200-8600	Wheel-Turf-Bearing-18x750x8-Tubeless
62	1	8200-1030	Spinner Assembly-Spreader-Magmaster 165-SS

