

# OWNER'S MANUAL



## WEEDWIPERS

1.95M ELIMINATOR



**P** 0800 853 002  
**E** [info@yelo-agri.com](mailto:info@yelo-agri.com)  
**W** [www.yelo-agri.com](http://www.yelo-agri.com)

### PARTS & SUPPORT

For parts and service support, contact your authorised Yelo store or visit our website for store locations. If you need further assistance, we are only a phone call or email away. Parts list included.



# SAFETY PRECAUTIONS

## Yelo 1.95 Eliminator Weedwiper

### AN IMPORTANT MESSAGE FOR OWNERS & OPERATORS OF IN-EX ATTACHMENTS/ACCESSORIES

Be warned of the dangers of loading your ATV or other vehicle in excess of its carrying capacity. It is important to understand that any loads or attachments whether fastened to or placed on a vehicle or ATV will alter the stability or handling characteristics of that vehicle or ATV. Spray tanks or other equipment must be filled only to a level where the gross weight is within the load limit of the ATV or other vehicle.

Safety is a primary concern in the design, manufacture, sale, and use of spray tanks and other equipment. As manufacturers of spray tanks and other equipment we want to confirm to you, our customers, our concern for safety. We take this opportunity to remind you about the simple, basic and common sense rules of safety when using spray tanks and other equipment. Failure to follow these rules can result in severe injury or death to operators and bystanders.

It is essential that everyone involved in the assembly, operation, transport, maintenance and storage of this equipment be aware, concerned, prudent and properly trained in safety.

This also applies to equipment that is loaned or rented to someone who has not read the owner's manual and is not familiar with the operation of application equipment.

- NEVER EXCEED THE LOAD LIMIT CAPACITY OF THE ATV OR OTHER VEHICLE.
- ALL ATV AND TRAILED EQUIPMENT TYRES SHOULD BE INFLATED TO MANUFACTURERS RECOMMENDED OPERATING PRESSURES.
- PLEASE NOTE THAT FILLING THE SPRAY TANK OR OTHER EQUIPMENT COMPLETELY AND OR THE ATTACHMENT OF ADDITIONAL EQUIPMENT TO THE ATV MAY EXCEED THE ATV'S MAXIMUM LOAD CAPACITY AND IT IS NOT RECOMMENDED TO EXCEED MANUFACTURERS GUIDELINES
- CARGO SHOULD BE PROPERLY DISTRIBUTED AND SECURELY ATTACHED.
- REDUCE SPEED WHEN CARRYING CARGO OR PULLING A TRAILER OR TRAILED APPLICATION EQUIPMENT AND ALLOW GREATER DISTANCE FOR BRAKING.
- NEVER ALLOW ANYONE TO RIDE ON YOUR SPRAYER OR OTHER EQUIPMENT.
- ALWAYS FOLLOW THE INSTRUCTIONS IN THE OWNER'S VEHICLE MANUAL FOR CARRYING CARGO OR PULLING A TRAILER.
- PROPER MAINTENANCE IN LINE WITH MANUFACTURER'S RECOMMENDED MAINTENANCE PROCEDURES IS ESSENTIAL.
- BEFORE APPLYING CHEMICALS, READ THE LABEL OF THE CHEMICAL MANUFACTURER OR SUPPLIER FOR PERSONAL PROTECTIVE EQUIPMENT AND OPERATE AS RECOMMENDED.
- THE SAFETY OF ALL CHEMICALS USED IN AGRICULTURE IS UNDER THE JURISDICTION OF A GOVERNMENT AGENCY, IE N.Z. MINISTRY FOR THE ENVIRONMENT; USA ENVIRONMENTAL PROTECTION AGENCY. FURTHER LOCAL GOVERNMENT OR STATE LAWS MAY APPLY.

Throughout this manual there are highlighted text boxes containing warnings, cautions and notes.

**Warnings** are mandatory instructions to prevent serious injury or permanent damage.

**Cautions** are advisory instructions to ensure reliable operation of the equipment.

**Notes** are for convenient operation.

# Yelo 1.95 Eliminator Weedwiper

## OWNER'S MANUAL

(Pt.No.2400-5810)

### TABLE OF CONTENTS

2	<b>Safety Precautions</b>
3	<b>Contents</b>
4	<b>Warranty</b>
	<b>Liability</b>
5	<b>Description</b>
	<b>Order Information</b>
6	<b>Assembly</b>
7	Hose Assembly
8	<b>Testing</b>
8	<b>Wiping</b>
8	<b>Chemical Application</b>
	Chemical Advice
	Herbicide Rates
	Adjuvants
9	<b>Calibration</b>
	Height Adjustment
11	Application Rates
	Maximum Speeds
	Setting the Flow Rate
12	<b>Maintenance</b>
	Flushing
	Filters
	Carpets
	Frame
	Wheels and Tyres
13	<b>Trouble Shooting</b>
14	<b>Exploded Parts Diagram - Weedwiper</b>
15	<b>Exploded Parts List – Weedwiper</b>

#### **WARNING**

The Weedwiper controller is not waterproof. It should be mounted appropriately and kept dry when not in use. Care should be taken when cleaning ATV's or other vehicles that water is not directed onto the controller.

## WARRANTY

### 1 WARRANTY AND LIABILITY

#### **Use of the equipment**

- 1.1 You must satisfy yourself as to the suitability of the equipment for your intended use(s) of the equipment.

#### **Your relationship with the retailer**

- 1.2 Where you consider you have a warranty claim (or any other claim) in relation to the equipment, you must contact the retailer who sold you the equipment, not RGL directly. The retailer is responsible for liaising with RGL in respect of your claim.

#### **Warranty**

- 1.3 RGL warrants to the original purchaser that the equipment is sold free from defects in materials and workmanship for a period of 12 months from date of first retail sale subject to the terms set out below.

- 1.4 RGL will at its option repair or replace the defective equipment (or part of the equipment) or notify the retailer of the equipment to refund the purchase price for such defective equipment to you in the event of a breach of this warranty, subject to the terms set out below.

#### **Liability**

- 1.5 Except for the warranty set out in clause 1.2 above, all warranties and representations (including those expressed or implied by law) in respect of the equipment or advice relating to the equipment provided to you by RGL are excluded to the extent permitted by law.

- 1.6 Notwithstanding anything else in this manual, RGL's maximum liability to you (in the event that such liability exists) in respect of any breach of warranty, any matter set out in this manual, or for defective equipment or advice relating to the equipment provided is limited at RGL's option to:

- (a) repairing or replacing the equipment (or part of the equipment); or
- (b) notifying the retailer of the equipment to refund the price for the equipment paid by you.

- 1.7 Notwithstanding anything else in this manual, in no event will RGL be liable, whether in contract, tort (including negligence) or otherwise:

- (a) where you have altered or modified the equipment, misused or misapplied the equipment, or the equipment has been subjected to any unusual, excessive or non-recommended use, service or handling (including as set out in this manual);
- (b) where the equipment is not transported, stored, handled or used in accordance with any directions given by RGL (or the retailer) to you (including as set out in this manual);
- (c) where the equipment:
  - (i) has been subject to neglect, accident or hireage, or the damage arises from fair wear and tear, battery damage or chemical attack;
  - (ii) has been built to a customer's specifications; or
  - (iii) has been dismantled, repaired or serviced other than by an authorised service agent of RGL;
- (d) for loss or damage caused by any factors beyond RGL's control; or

(e) for any loss of profit or revenue, or for any special, indirect, incidental or consequential damage, loss or injury of any kind suffered by you.

- 1.8 Where RGL elects to repair or replace the equipment it will use reasonable endeavours to do so as soon as practicable but will not be liable for any delay in doing so.
- 1.9 You agree that the transactions entered into between you and the retailer (and RGL) are for the purposes of trade and that, having regard to all relevant circumstances of the transactions, it is fair and reasonable that the provisions of the Consumer Guarantees Act 1993 (NZ) do not apply to those transactions to the fullest extent permitted by law.

### DESCRIPTION

The Yelo Eliminator Weedwiper is the latest model in the popular Yelo range of products. It is a trailed wiper with a 1.95m effective width and has been designed for maximum strength with minimum weight. All wiping loads are taken on the vehicle tow bar.

The Yelo Weedwiper is a very powerful tool in the fight against erect weeds such as rushes, fern, annual buttercup, ragwort, docks, and thistle. Control of these weeds is now easy and environmentally and operator friendly. The unique extended wiping action ensures that in most cases only one pass is required at speeds of up to 12 kph. Very little herbicide is wasted because only the weeds are contacted. Wiping can be done on hillsides and in windy conditions.

The Weedwiper has four wiping heights from approximately 50mm to 350mm. Each Weedwiper is supplied with a 50L tank and an electronic pump control unit for hands-free operation.

The Weedwiper employs a unique Yelo pressurised feed system to ensure even flow of spray fluid across the wiper frame irrespective of the slope of the area being wiped.

### ORDER INFORMATION

	<u>NZ</u>	<u>EXPORT-AUS &amp; UK (Both with 50mm HITCH)</u>
Weedwiper	1127	1127

## ASSEMBLY

### NOTE

To aid assembly, exploded parts diagram of the Weedwiper is shown at the end of this document.

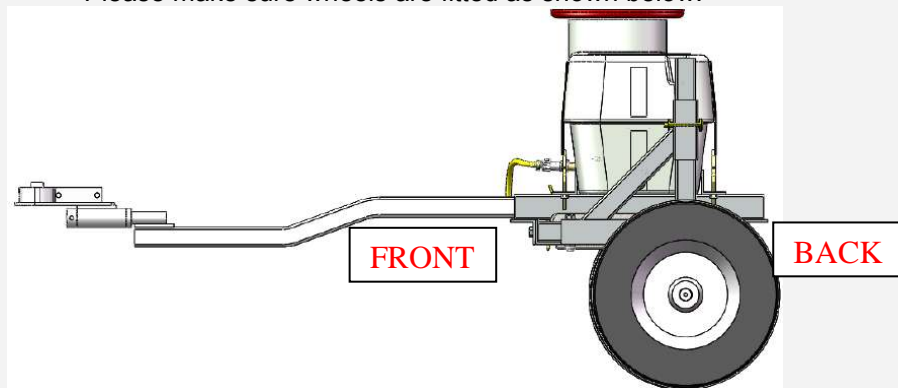
Unpack the Weedwiper and check the contents. Each Weedwiper is shipped assembled in kit form. Each kit contains the wiper frame, draw bar, left and right hand wheel assemblies, and parts kit.

The Weedwiper parts kit contains the following parts:

Part	Description	Qty
2400-5810	Document-Manual-Weedwiper	1
2840-1265	Fastener-Bolt&Nut-Hex-8.8 Grade-M12x65-ZP	4
3170-0012	Fastener-Nut-Nyloc-M12-ZP	4
5300-5000	Nozzle-Plate-Teejet-Orifice-0.055in-SS	1
6100-4800	Pin-Locking-11x100mm-ZP	3
3310-6012	Fastener-Washer-Flat-M12-ZP	8
1500-1900	ON/OFF Switch with mule 12V fitting	1

### NOTE

Front end of Weedwiper is identified as the side hoses are running along.  
Please make sure wheels are fitted as shown below:



### Standard Weedwiper Frame

Attach the left and right wheel assemblies to the frame using the lock pins provided. There is a left hand and right hand height adjuster.

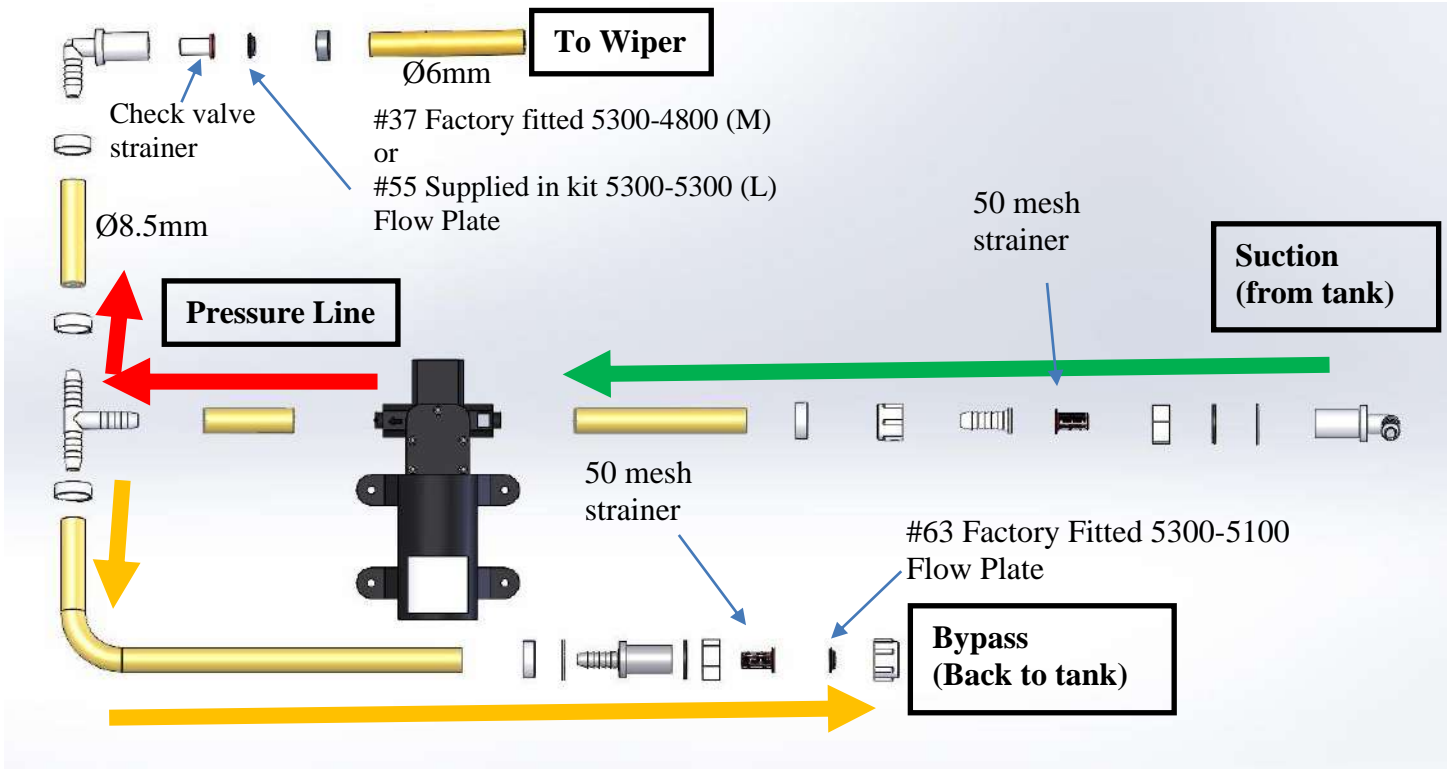
Fit the centre tank / drawbar frame to the wiper frame with the bolts and nuts provided.

Insert the drawbar into the centre tank / drawbar frame with the appropriate orientation to match the height of the ATV tow ball. Ensure that the wiper frame is level as possible (if necessary invert the draw bar to obtain the correct height). Secure the draw bar with the small lock pin provided and latch the pin with the spring clip.

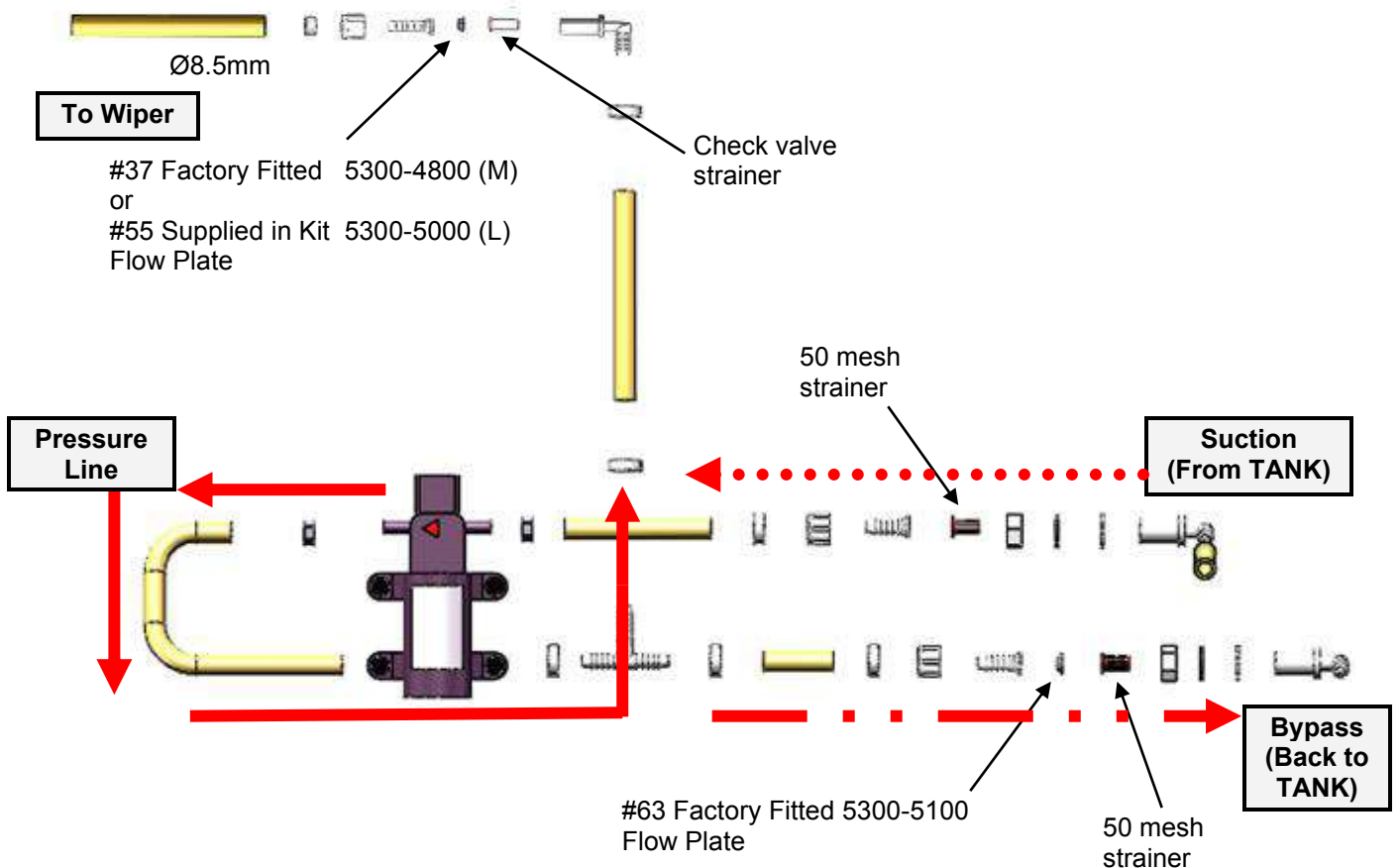
Attach the Eliminator to the vehicle tow ball, ensuring that the tow hitch size is correct for your vehicles tow ball.

### Hose Assembly

#### Weedwipers purchased after April 2024



#### Weedwipers purchased before April 2024



Purchasers must ensure that operators of these machines are fully aware of the dangers of spraying chemicals.

## TESTING

1. Part fill the tank with fresh clean water.
2. Turn on the pump using the switch on the loom.

### CAUTION

When using the electronic control panel it is essential that the sprayer battery cable be correctly connected. If incorrect polarity is applied to the control panel the internal protection circuit will cause the fuse will blow. Repeat applications of power will eventually damage the protection circuit. If the fuse blows, check the polarity of the battery cable before replacing the fuse.

3. Check that there are no leaks in the hose connections.
4. Allow the carpets to become wet until dripping. The flow rate from each carpet should be the same and should cause even wetting along the entire length of each carpet.

### NOTE

When the wiper is used for the first time, it may be necessary to break the surface tension of the woolen wiper pads. Mix up some detergent and tip it over the wiper pads.

## WIPING

For best results the following points should be noted:

- a. Use clean fresh water, preferably tank water.
- b. It is advisable to graze pasture well before wiping to maximise the weed's exposure to the wiper.
- c. Remove excessive dead material in weeds such as rushes and fern by hard grazing or burning then wipe the fresh re-growth.
- d. Avoid low humidity, hot, dry conditions.
- e. The weeds should be actively growing and not under any stress.
- f. Use an adjuvant - see section 'adjuvants'
- g. Prevent mud, dust and dirt from getting on the carpets. This can easily occur during transport. Put mud-flaps on the towing vehicle.

## CHEMICAL APPLICATION

### Chemical Advice

RGL or their agents cannot make recommendations or give advice as to the use of chemicals and cannot accept responsibility for any damage, injury or other consequence for disregarding this warning notice. Contact your chemical supplier for advice.

### WARNING

Mixing chemicals is a most dangerous activity as it involves handling the concentrated material. For toxic compounds, use protective clothing such as overalls, hat, gloves, boots and respirator.

When using diluted sprays, wear at least a hat, long-sleeved cotton overalls, and boots. If you use pesticides regularly, it is a good idea to always wear a respirator to avoid accumulation of toxins in the body. Other protection may be required. Check the label for specific directions for the particular chemical.

Protective clothing should be properly cared for. Rinse contaminated clothes in the open before washing in the laundry – be sure to keep separate from other washing.

Respirators need special care. Clean respirator after spraying. Use soapy water then rinse and allow to dry completely before storing in a clean plastic bag. Replace canisters in respirator after eight hours use.

Purchasers must ensure that operators of these machines are fully aware of the dangers of spraying chemicals.

### **Herbicide Rates**

The following mixing ratios (chemical : water plus adjuvant) have been found more than adequate by Eliminator users:

- 24-D (annual thistles) 1 : 10
- Escort (ragwort) 1 gram : 1 litre
- Glyphosate (rushes, Californian thistle, Fescue) 1 : 20 to 1 : 10
- Tordon Max (Californian thistle, Ragwort) 1 : 20 (single pass)  
1 : 40 (double pass)

### **Adjuvants**

Adjuvants are ingredients added to a pesticide to improve its performance.

The use of an adjuvant is recommended when wiping. They improve capillary action in the carpet, increase viscosity for better flow of the chemical solution, and improve adhesion and uptake into plant surfaces.

Thoroughly mix the herbicide and any adjuvants, with the water according to the instructions from the herbicide and adjuvant manufacturers.

Begin wiping soon after filling the tank.

If a solution has been left standing for more than two hours stir it, or if a tank agitation system is available, turn it on.

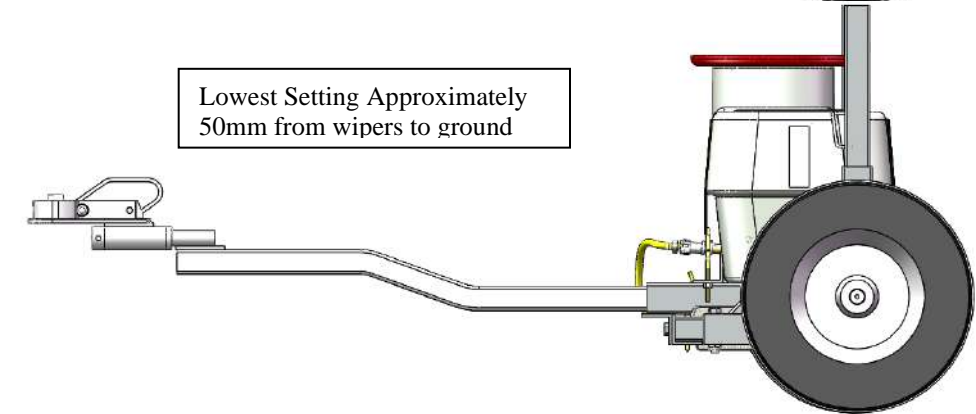
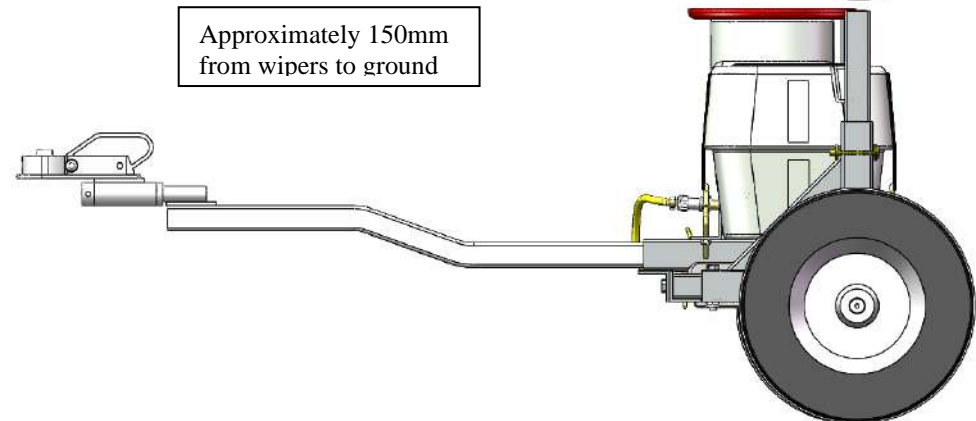
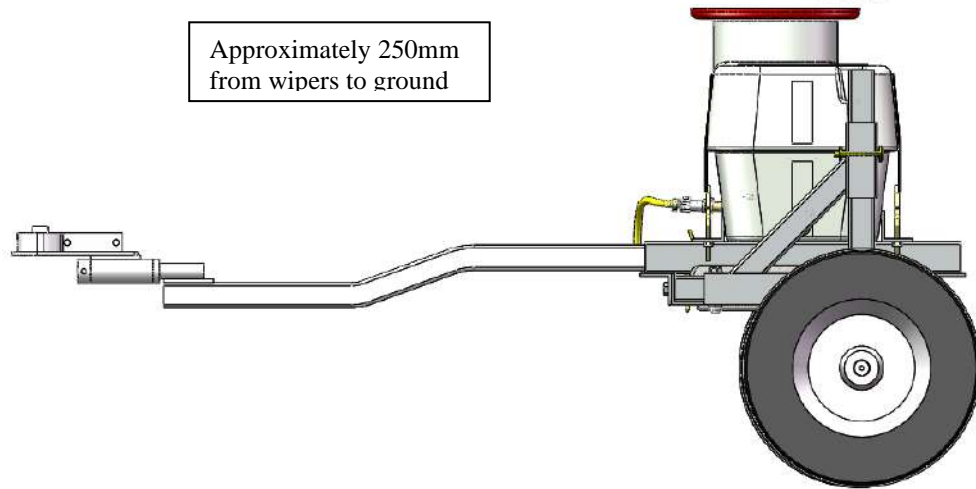
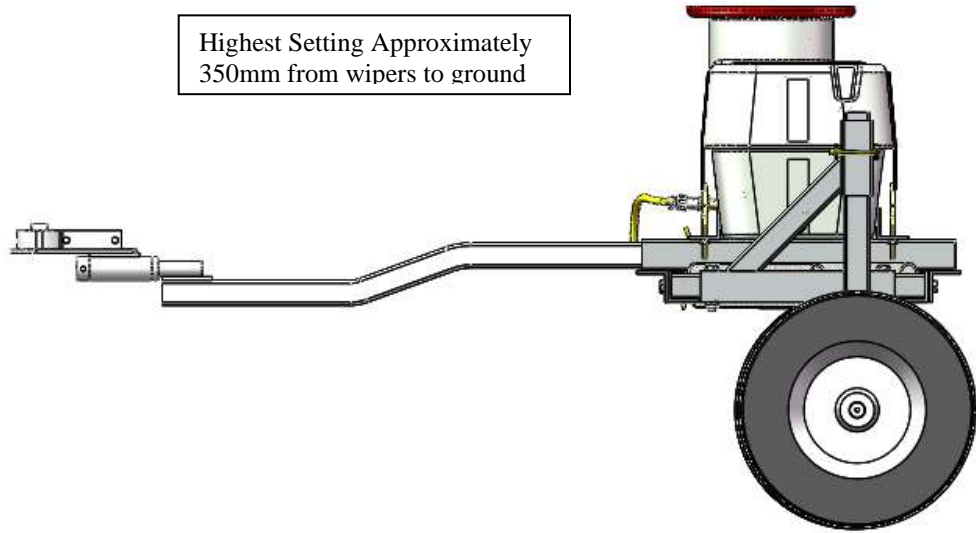
## **CALIBRATION**

### **Height Adjustment**

Run the wiper over the weeds and check that the height is suitable. Set the wiper as low as possible without running the risk of causing damage to the pasture, crop or frame. Whilst the Eliminator has been designed to withstand ground strikes, it should not be set so low that ground strikes re occur. Remember, the wiper is not a bulldozer.

The eliminator has four height settings shown below. The draw bar can be inserted into one of two holes and the wheel has four adjustment holes. The swivel tow hitch also allows the draw bar to be inserted upside down.

# HEIGHT DIAGRAM



### **Application Rates – Weedwiper**

The Weedwiper can be set up for medium or high application rates. For medium rates, a flow plate marked M (#37) is fitted in the delivery line to the wiper. This is the standard configuration. If a high application rate is required, a large flow plate marked L (#55) can be fitted. The flow plate in the bypass line is always a #63.

To change the flow plate, refer to the figure on page 7. Remove the nut connecting the delivery tube from the wiper to the white tee. Take care not to drop the check valve strainer when the nut is removed. Remove the M (#37) flow plate and replace it with the L (#55) flow plate provided in the parts kit. Ensure that the check valve strainer is in place then replace the nut.

The average application rates per hectare at 8 kph are:

M Flow Plate #37 - 670ml/minute (215 l/ha)

L Flow Plate #55 - 1246 ml/minute (40 l/ha)

### **Maximum Speeds**

The Weedwiper can be towed at up to 15 Kph. However when wiping the following speeds have been found to be effective;

- a. Sparse infestations of easy to kill weeds (e.g. Scotch Thistle) - 12 kph.
- b. Very thick undulating infestations, (e.g. Rushes and Bracken) - 5 to 8 kph.

### **WARNING**

Operation of the Weedwiper at high speed over rough ground may damage the frame. Do not allow the Weedwiper to bounce or hit fixed objects.

# MAINTENANCE

## **Flushing**

Flush the tank and wiping system before storing. Turn the switch on, or couple the pump direct to the battery lead so that the pump runs continuously.

Flush once with clean fresh water and detergent, then twice with clean water. Allow at least 4 minutes each time. During the flushing procedure, hose the carpets down with clean water to remove any dirt or other matter.

Check for even flow from all carpets.

Allow the carpets to dry out then store in a clean dry shed out of sunlight.

Wash any dust from the carpets before the next use.

## **Filters**

After each use, remove the nuts from the tee in the hose assembly, check the strainers, and flow plates for blockages.

## **CAUTION**

After cleaning the flow plates and strainers, ensure that the M flow plate and check valve strainer are fitted in the connection to the delivery line to the wiper, and that the #63 plate and non-check valve strainer are fitted in the bypass line to the tank. Failure to correctly install the flow plates and strainers will result in defective operation of the wiper.

## **Carpets**

Inspect the wipers regularly and replace any that are badly worn or torn.

## **Frame**

Inspect the bolts and tighten if loose. Never operate the wiper with loose bolts.

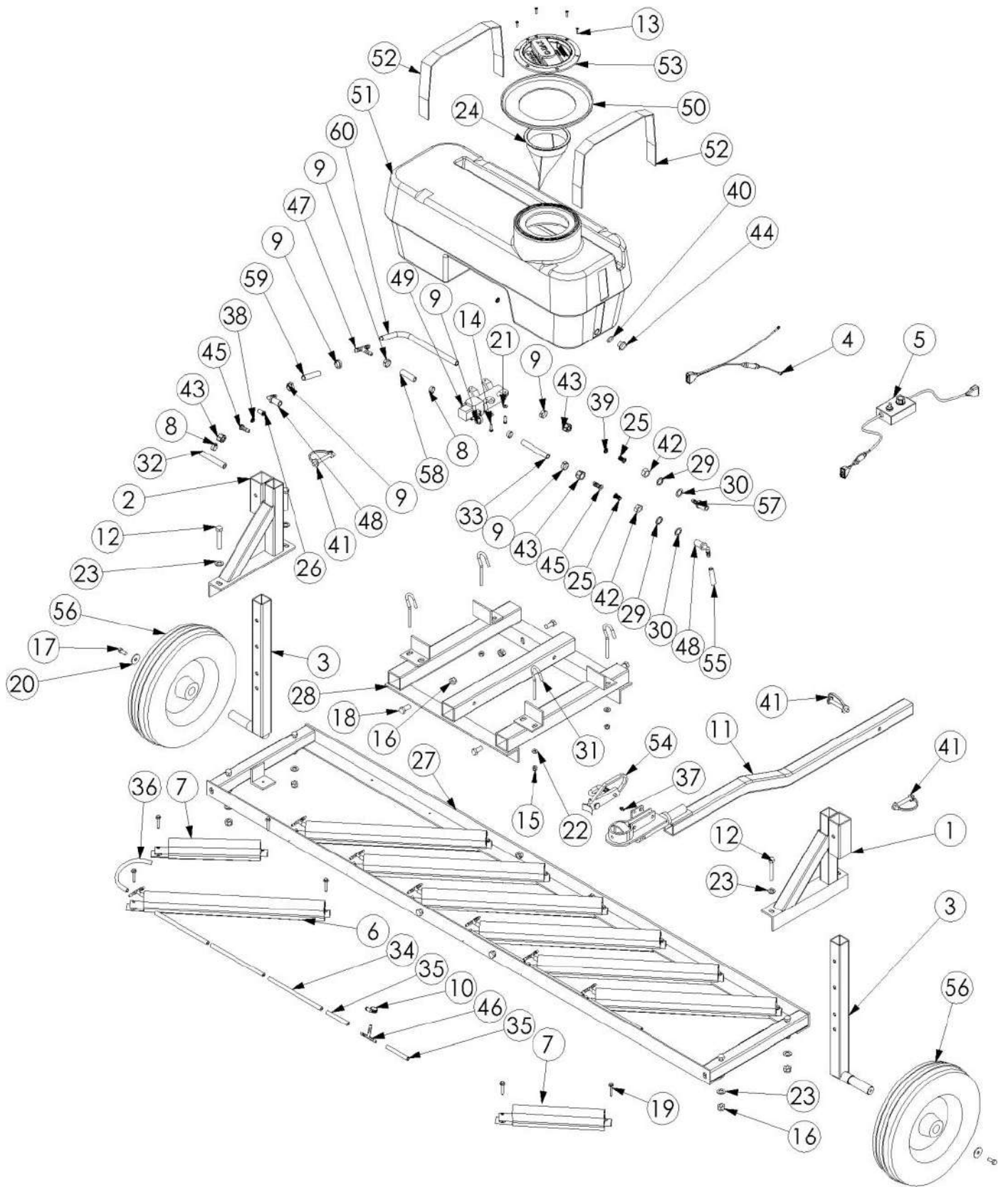
## **Wheels and Tyres**

Lubricate the axles after each use and check the tyre pressures. The correct tyre pressure is 15 psi (100KPA).

# TROUBLE SHOOTING

PROBLEM	CAUSE	ACTION
Insufficient flow from ALL carpets	1. Faulty pump	Return to supplier for service
	2. Blocked suction filter	Clean
	3. Blocked flow plate or filter at check valve on hose to wiper	Clean
	4. Kinked hose	Straighten
Insufficient flow from one carpet	1. Blocked soak line under carpet	Remove carpet and check. Replace or clean
	2. Blocked hose tail connector at base of yellow carpet pipe	Flush and wash down carpets
Uneven wetting along a carpet.	1. Partial blocking of soak line under carpet.	Remove carpet and check soak line.
	2. Carpets not cleaned properly	Replace or clean Flush and wash down carpets
Too much flow from carpets	1. Pump operating for too long	Reduce pumping interval
	2. Flow plates incorrect	Check and correct
High initial flow from carpets when pump turns on	1. Blocked flow plate or filter at check valve on the by-pass hose	Clean
Pump fails to prime	1. Faulty pump	Return to supplier for service
	2. Air in suction line	Check connections for leaks
Pump fails to operate	1. Faulty Electronic controller	Return to supplier for service
	2. Faulty electrical connection	Check connections
	3. Faulty pump	Return to supplier for service
Fuse blows each time power is applied	1. Battery cable connected incorrectly	Check battery connections and reverse if required

# EXPLODED PARTS DIAGRAM – WEEDWIPER(after April 2024)



Item No.	QTY.	part no	description
1	1	1018-3930	Adjuster-height-InEx-Wiper-LH-ZP
2	1	1018-3931	Adjuster-height-InEx-Wiper-RH-ZP
3	2	1082-2420	Axle-Wiper-InEx-ZP
4	1	1500-1900	ON/OFF Switch with Mule 12V Fitting
5	7	1700-1530	Carpet-Wiper Assembly-Eliminator-530mm
6	2	1700-2300	Carpet-Wiper Assembly-Eliminator-Outer-300mm
7	3	2000-2014	Clamp-Hose-Oetiker-Single Ear Stepless-14.5<>7.0mm-S/S
8	6	2000-2015	Clamp-Hose-Oetiker-Single Ear Stepless-15.3<>18.5mm-S/S
9	1	2000-4008	Clamp-Hose-Worm Drive-Jubilee-8mm-Stainless
10	1	2550-2300	Drawbar-Eliminator-ZP
11	8	2840-1265	Fastener-Bolt&Nut-Hex-8.8 Grade-M12x65-ZP
12	6	3070-0300	Fastener-Machine-Screw-CSK-8Gx3/4-Pozi-Stainless
13	4	3110-0520	Fastener-Machine-Screw-Pan-M5x20-Pozi-ZP
14	4	3170-0008	Fastener-Nut-Nyloc-M8-ZP
15	16	3170-0012	Fastener-Nut-Nyloc-M12-ZP
16	2	3290-0820	Fastener-Set Screw-Hex-8.8 Grade-M8x20-ZP
17	8	3290-1225	Fastener-Set Screw-Hex-8.8 Grade-M12x25-ZP
18	21	3300-6100	Fastener-Tek Screw-Hex-12Gx40-Hitek-Fully Threaded-ZP
19	2	3310-3008	Fastener-Washer-Flat-Fender-M8x32x1.5-ZP
20	4	3310-6005	Fastener-Washer-Flat-M5-ZP
21	4	3310-6008	Fastener-Washer-Flat-M8-ZP
21	8	3310-6012	Fastener-Washer-Flat-M12-ZP
22	1	3400-1110	Filter-Basket-D150-Mesh
24	2	3400-5400	Filter-Nozzle Tip-50 Mesh-Plastic
25	1	3400-5410	Filter-Nozzle-Tip-Incl Check Valve-50Mesh-5PSI-SS Ball-Plastic
26	1	3500-7900	Frame-Wiper-InEx - GL
27	1	3500-7901	Frame-Wiper-Tank Mount - InEx - ZP
28	2	3700-9130	Gasket-Washer-17x23x2-Rubber
29	2	3700-9150	Gasket-Washer-25x17.4x1.4-Nylon
30	4	4085-1010	Hook-Bolt-Threaded-M8-Slimline-ZPG
31	1	4100-0008	Hose-Spray-Delivery-40 Bar-8.5mm ID-Yellow (0.105m)
32	1	4100-0008	Hose-Spray-Delivery-40 Bar-8.5mm ID-Yellow (0.090m)
33	6	4100-1006	Hose-Spray-Delivery-7 Bar-6mm ID-PVC
34	2	4100-1006	Hose-Spray-Delivery-7 Bar-6mm ID-PVC
35	1	4100-1006	Hose-Spray-Delivery-7 Bar-6mm ID-PVC
36	1	5270-0003	Nipple-Grease-Straight-Short-M6-ZP
37	1	5300-4800	Nozzle-Plate-Teejet-Orifice-0.037IN-SS
38	1	5300-5100	Nozzle-Plate-Teejet-Orifice-0.063in-SS
39	1	5450-2220	O'Ring-Imperial-1/8"x5/8"-N70
40	3	6100-4780	Pin-Locking-10x57mm-ZP
41	2	6200-5420	Pipe-Fitting-Nut-Back-11/16UNFM-Plastic
42	3	6200-5550	Pipe-Fitting-Nut-Swivel-11/16UNFF-Plastic
43	1	6200-6260	Pipe-Fitting-Plug-Thumb Screw-3/8BSPM-Black-Plastic
44	2	6200-8220	Pipe-Fitting-Straight-10 Shank-Swivel-Suit Fly Nut-Plastic
45	1	6200-9130	Pipe-Fitting-Tee-6 Shankx6 Shankx6 Shank-Plastic
46	1	6200-9140	Pipe-Fitting-Tee-10 Shankx10 Shankx10 Shank-Plastic
47	2	6200-9400	Pipe-Fitting-Thru Tank-Elbow-10 Shankx11/16UNFM-Nylon
48	1	6800-4000	Pump-Flojet-LF12-12 Volt-3.8LPM-10mm Hose Shanks

49	1	7500-1760	Rota-Flange-50L-Red-MDPE
50	1	7500-3550	Rota-Tank-50L-In-Ex-Natural-MDPE
51	2	8410-9067	Strap-Web Sling-670Long-38mm-900KG-Reduced and Reversed-KS1 Material-Black
52	1	8427-6000	Sub-Lid & Ring Assembly-D150-In-Ex Vented-Nylon-Black
53	1	8800-3800	Tow-Coupling-Handle-Double Ended-1 78 x 50mm-ZP
54	1	8840-8410	Tube-Transluscent-10MM-100PSI (0.08m)
55	2	9200-7500	Wheel-Ribbed-350x8-4 Ply-3 Ribs-BW Series
56	1	6200-8280	Pipe-Fitting-Straight-10 Shankx11/16UNFM-Plastic
57	1	4100-0008	Hose-Spray-Delivery-40 Bar-8.5mm ID-Yellow (0.055m)
58	1	4100-0008	Hose-Spray-Delivery-40 Bar-8.5mm ID-Yellow (0.065m)
59	1	4100-0008	Hose-Spray-Delivery-40 Bar-8.5mm ID-Yellow (0.35m)