

OWNER'S MANUAL



WEEDWIPERS

2.4M ELIMINATOR

4.5M ELIMINATOR



P 0800 853 002
E info@yelo-agri.com
W www.yelo-agri.com

PARTS & SUPPORT

For parts and service support, contact your authorised Yelo store or visit our website for store locations. If you need further assistance, we are only a phone call or email away. Parts list included.



SAFETY PRECAUTIONS

Eliminator & Winged Eliminator

AN IMPORTANT MESSAGE FOR OWNERS & OPERATORS OF Eliminator ATTACHMENTS/ACCESSORIES

Be warned of the dangers of loading your ATV or other vehicle in excess of its carrying capacity. It is important to understand that any loads or attachments whether fastened to or placed on a vehicle or ATV will alter the stability or handling characteristics of that vehicle or ATV. Spray tanks or other equipment must be filled only to a level where the gross weight is within the load limit of the ATV or other vehicle.

Safety is a primary concern in the design, manufacture, sale, and use of spray tanks and other equipment. As manufacturers of spray tanks and other equipment we want to confirm to you, our customers, our concern for safety. We take this opportunity to remind you about the simple, basic and common sense rules of safety when using spray tanks and other equipment. Failure to follow these rules can result in severe injury or death to operators and bystanders.

It is essential that everyone involved in the assembly, operation, transport, maintenance and storage of this equipment be aware, concerned, prudent and properly trained in safety.

This also applies to equipment that is loaned or rented to someone who has not read the owner's manual and is not familiar with the operation of application equipment.

- NEVER EXCEED THE LOAD LIMIT CAPACITY OF THE ATV OR OTHER VEHICLE.
- ALL ATV AND TRAILED EQUIPMENT TYRES SHOULD BE INFLATED TO MANUFACTURERS RECOMMENDED OPERATING PRESSURES.
- PLEASE NOTE THAT FILLING THE SPRAY TANK OR OTHER EQUIPMENT COMPLETELY AND OR THE ATTACHMENT OF ADDITIONAL EQUIPMENT TO THE ATV MAY EXCEED THE ATV'S MAXIMUM LOAD CAPACITY AND IT IS NOT RECOMMENDED TO EXCEED MANUFACTURERS GUIDELINES
- CARGO SHOULD BE PROPERLY DISTRIBUTED AND SECURELY ATTACHED.
- REDUCE SPEED WHEN CARRYING CARGO OR PULLING A TRAILER OR TRAILED APPLICATION EQUIPMENT AND ALLOW GREATER DISTANCE FOR BRAKING.
- NEVER ALLOW ANYONE TO RIDE ON YOUR SPRAYER OR OTHER EQUIPMENT.
- ALWAYS FOLLOW THE INSTRUCTIONS IN THE OWNER'S VEHICLE MANUAL FOR CARRYING CARGO OR PULLING A TRAILER.
- PROPER MAINTENANCE IN LINE WITH MANUFACTURER'S RECOMMENDED MAINTENANCE PROCEDURES IS ESSENTIAL.
- BEFORE APPLYING CHEMICALS, READ THE LABEL OF THE CHEMICAL MANUFACTURER OR SUPPLIER FOR PERSONAL PROTECTIVE EQUIPMENT AND OPERATE AS RECOMMENDED.
- THE SAFETY OF ALL CHEMICALS USED IN AGRICULTURE IS UNDER THE JURISDICTION OF A GOVERNMENT AGENCY, IE N.Z. MINISTRY FOR THE ENVIRONMENT; USA ENVIRONMENTAL PROTECTION AGENCY. FURTHER LOCAL GOVERNMENT OR STATE LAWS MAY APPLY.

Throughout this manual there are highlighted text boxes containing warnings, cautions and notes.

Warnings are mandatory instructions to prevent serious injury or permanent damage.

Cautions are advisory instructions to ensure reliable operation of the equipment.

Notes are for convenient operation.

2.4m Eliminator

4.5m Winged Eliminator

OWNER'S MANUAL

(Pt.No.2400-5800 - March 2026)

TABLE OF CONTENTS

2	Safety Precautions
3	Contents
4	Warranty
	Liability
5	Description
	Order Information
	Optional Equipment
6	Assembly
7	Standard Eliminator
7	Winged Eliminator
8	Wiping
	Chemical Application
	Chemical Advice
	Herbicide Rates
	Adjuvants
8	Calibration
	Height Adjustment
10	Eliminator Tank Pt. No 1017
14	Testing
	Maximum Speeds
	Setting the Flow Rate
15	Maintenance
	Flushing
	Filters
	Carpets
	Frame
	Wheels and Tyres
16	Trouble Shooting
17	Exploded Parts Diagram - Eliminator
18	Parts List – Eliminator
19	Exploded Parts Diagram – Winged Eliminator
20	Parts List – Winged Eliminator

WARNING

The Winged Eliminator utilize a latch mechanism to hold the wings in the upright position. Extreme care must be taken to ensure that the wings are in the upright position before proceeding through gateways. The latch mechanism should be regularly inspected to ensure that the latches are engaging fully and the wings are remaining upright.

WARNING

The Eliminator controller is not waterproof. It should be mounted appropriately and kept dry when not in use. Care should be taken when cleaning ATV's or other vehicles that water is not directed onto the controller.

WARRANTY

1 WARRANTY AND LIABILITY

Use of the equipment

- 1.1 You must satisfy yourself as to the suitability of the equipment for your intended use(s) of the equipment.

Your relationship with the retailer

- 1.2 Where you consider you have a warranty claim (or any other claim) in relation to the equipment, you must contact the retailer who sold you the equipment, not RGL directly. The retailer is responsible for liaising with RGL in respect of your claim.

Warranty

- 1.3 RGL warrants to the original purchaser that the equipment is sold free from defects in materials and workmanship for a period of 12 months from date of first retail sale subject to the terms set out below.

- 1.4 RGL will at its option repair or replace the defective equipment (or part of the equipment) or notify the retailer of the equipment to refund the purchase price for such defective equipment to you in the event of a breach of this warranty, subject to the terms set out below.

Liability

- 1.5 Except for the warranty set out in clause 1.2 above, all warranties and representations (including those expressed or implied by law) in respect of the equipment or advice relating to the equipment provided to you by RGL are excluded to the extent permitted by law.

- 1.6 Notwithstanding anything else in this manual, RGL's maximum liability to you (in the event that such liability exists) in respect of any breach of warranty, any matter set out in this manual, or for defective equipment or advice relating to the equipment provided is limited at RGL's option to:

- (a) repairing or replacing the equipment (or part of the equipment); or
- (b) notifying the retailer of the equipment to refund the price for the equipment paid by you.

- 1.7 Notwithstanding anything else in this manual, in no event will RGL be liable, whether in contract, tort (including negligence) or otherwise:

- (a) where you have altered or modified the equipment, misused or misapplied the equipment, or the equipment has been subjected to any unusual, excessive or non-recommended use, service or handling (including as set out in this manual);
- (b) where the equipment is not transported, stored, handled or used in accordance with any directions given by RGL (or the retailer) to you (including as set out in this manual);
- (c) where the equipment:
 - (i) has been subject to neglect, accident or hireage, or the damage arises from fair wear and tear, battery damage or chemical attack;
 - (ii) has been built to a customer's specifications; or
 - (iii) has been dismantled, repaired or serviced other than by an authorised service agent of RGL;
- (d) for loss or damage caused by any factors beyond RGL's control; or

(e) for any loss of profit or revenue, or for any special, indirect, incidental or consequential damage, loss or injury of any kind suffered by you.

- 1.8 Where RGL elects to repair or replace the equipment it will use reasonable endeavours to do so as soon as practicable but will not be liable for any delay in doing so.
- 1.9 You agree that the transactions entered into between you and the retailer (and RGL) are for the purposes of trade and that, having regard to all relevant circumstances of the transactions, it is fair and reasonable that the provisions of the Consumer Guarantees Act 1993 (NZ) do not apply to those transactions to the fullest extent permitted by law.

DESCRIPTION

The Yelo Eliminator is the latest model in the popular Yelo weed wiper range of products. It is a trailed wiper with a 2.4m effective width or 4.5m effective width for the Winged Eliminator and has been designed for maximum strength with minimum weight. All wiping loads are taken on the vehicle tow bar.

The Yelo Eliminator is a very powerful tool in the fight against erect weeds such as rushes, fern, annual buttercup, ragwort, docks, thistles and other. Control of these weeds is now easy and environmentally and operator friendly. The unique extended wiping action ensures that in most cases only one pass is required at speeds of up to 12 kph. Very little herbicide is wasted because only the weeds are contacted. Wiping can be done on hillsides and in windy conditions.

The Eliminator has four wiping heights from approximately 50mm to 350mm and is compatible with the Yelo eliminate tank. Each Eliminator is supplied with an electronic pump control unit for hands-free operation.

The Eliminator employs a unique Yelo pressurised feed system to ensure even flow of spray fluid across the wiper frame irrespective of the slope of the area being wiped.

ORDER INFORMATION

	<u>NZ</u>	<u>EXPORT-AUS & UK (Both with 50mm HITCH)</u>
Eliminator	1015/1017	1015
Winged Eliminator	1016/1017	1016

OPTIONAL EQUIPMENT

External hose assembly	8427-4200	Allows the Eliminator to be operated with an external spray tank (that is mounted on the towing vehicle)
50L Onboard tank	1017	Tank & pump to fit on top of Eliminator (Standard in NZ)
Eliminator Wings	4500-9350	To upgrade a 2.4m Eliminator to 4.5m

ASSEMBLY

NOTE

To aid assembly, exploded parts diagram of the Eliminator and Winged Eliminator are shown at the end of this document.

Unpack the Eliminator and check the contents. Each Eliminator is shipped assembled in kit form. Each kit contains the wiper frame, draw bar, left and right hand wheel assemblies, and parts kit.

The standard Eliminator parts kit contains the following parts:

Part	Description	Qty
1500-4300	Cable-Electrical-Loom-Eliminator-Control Box	1
2400-5800	Document-Manual-Eliminator-G2	1
1018-3921	Adjuster-Height-Eliminator-RH-ZP	1
1018-3920	Adjuster-Height-Eliminator-LH-ZP	1
2000-4008	Clamp-Hose-Worm Drive-Jubilee-8mm-Stainless	1
2840-1290	Fastener-Bolt&Nut-Hex-8.8 Grade-M12x90-ZP	4
3170-0012	Fastener-Nut-Nyloc-M12-ZP	4
3310-5012	Fastener-Washer-Flat-Heavy-M12x32x3-Galv	8
6100-4780	Pin-Locking-10x57mm-ZP	1
6100-4800	Pin-Locking-11x100mm-ZP	2

Standard Eliminator Frame

Attach the left and right wheel assemblies to the frame using the M12 bolts, washers and nyloc nuts. There is a left hand and right hand height adjuster. The flats on the height adjusters should face the outside of the frame. Ensure that the nuts are done up tight so that there is no sideways movement of the wheel assembly.

Lift the wiper frame to the desired wiping height and insert the large lock pins through the corresponding holes. Secure the lock pins with the spring clip.

Insert the drawbar into the appropriate socket to match the height of the ATV tow ball. Ensure that the wiper frame is level (if necessary invert the draw bar to obtain the correct height). Secure the draw bar with the small lock pin provided and latch the pin with the spring clip.

Attach the Eliminator to the vehicle tow ball, ensuring that the tow hitch size is correct for your vehicles tow ball.

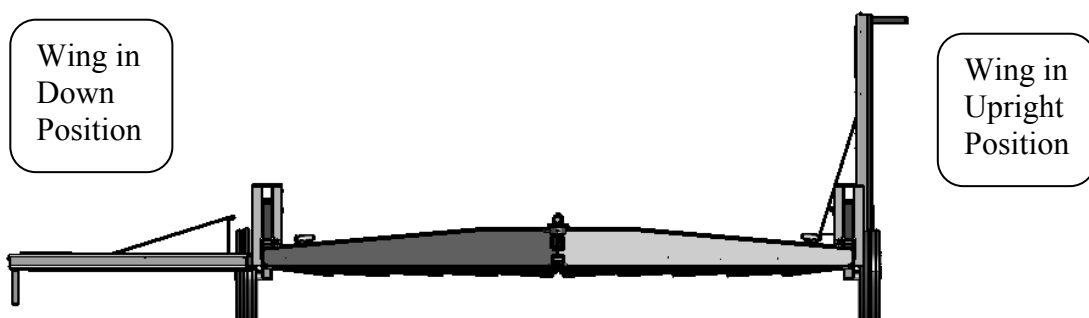
Winged Eliminator

In addition to the assembly detailed above, the left hand and right hand self angling wings need to be bolted to the centre section. To find the right hand and left hand wing, align the frames so that the 'bruise bars' on all sections are facing forward. Each wing is bolted through two hinges at either end of the centre section using two M8x10x25 shoulder bolts, four M8 washers, four M10 washers and two M8 Nyloc nuts. For assembly detail please refer to the exploded parts diagrams at the end of this manual.

To connect the plumbing to each wing simply connect the male quick coupler on the wing to the female coupling on the centre section. These quick couplers are self sealing and therefore give the option of leaving the couplers disconnected and the wings in the upright position, utilizing only the centre section if desired.

WARNING

Always check Eliminator wings are in the upright position before proceeding through gates.



WIPING

For best results the following points should be noted:

- a. Use clean fresh water, preferably tank water.
- b. It is advisable to graze pasture well before wiping to maximise the weed's exposure to the wiper.
- c. Remove excessive dead material in weeds such as rushes and fern by hard grazing or burning then wipe the fresh re-growth.
- d. Avoid low humidity, hot, dry conditions.
- e. The weeds should be actively growing and not under any stress.
- f. Use an adjuvant - see section 'adjuvants'
- g. Prevent mud, dust and dirt from getting on the carpets. This can easily occur during transport. Put mud-flaps on the towing vehicle.

CHEMICAL APPLICATION

Chemical Advice

RGL or their agents cannot make recommendations or give advice as to the use of chemicals and cannot accept responsibility for any damage, injury or other consequence for disregarding this warning notice. Contact your chemical supplier for advice.

WARNING

Mixing chemicals is a most dangerous activity as it involves handling the concentrated material. For toxic compounds, use protective clothing such as overalls, hat, gloves, boots and respirator.

When using diluted sprays, wear at least a hat, long-sleeved cotton overalls, and boots. If you use pesticides regularly, it is a good idea to always wear a respirator to avoid accumulation of toxins in the body. Other protection may be required. Check the label for specific directions for the particular chemical.

Protective clothing should be properly cared for. Rinse contaminated clothes in the open before washing in the laundry – be sure to keep separate from other washing.

Respirators need special care. Clean respirator after spraying. Use soapy water then rinse and allow to dry completely before storing in a clean plastic bag. Replace canisters in respirator after eight hours use.

Purchasers must ensure that operators of these machines are fully aware of the dangers of spraying chemicals.

Herbicide Rates

The following mixing ratios (chemical : water plus adjuvant) have been found more than adequate by Eliminator users:

- | | |
|--|--|
| • 24-D (annual thistles) | 1 : 10 |
| • Escort (ragwort) | 1 gram : 1 litre |
| • Glyphosate (rushes, Californian thistle, Fescue) | 1 : 20 to 1 : 10 |
| • Tordon Max (Californian thistle, Ragwort) | 1 : 20 (single pass)
1 : 40 (double pass) |

Adjuvants

Adjuvants are ingredients added to a pesticide to improve its performance.

The use of an adjuvant is recommended when wiping. They improve capillary action in the carpet, increase viscosity for better flow of the chemical solution, and improve adhesion and uptake into plant surfaces.

Thoroughly mix the herbicide and any adjuvants, with the water according to the instructions from the herbicide and adjuvant manufacturers.

Begin wiping soon after filling the tank.

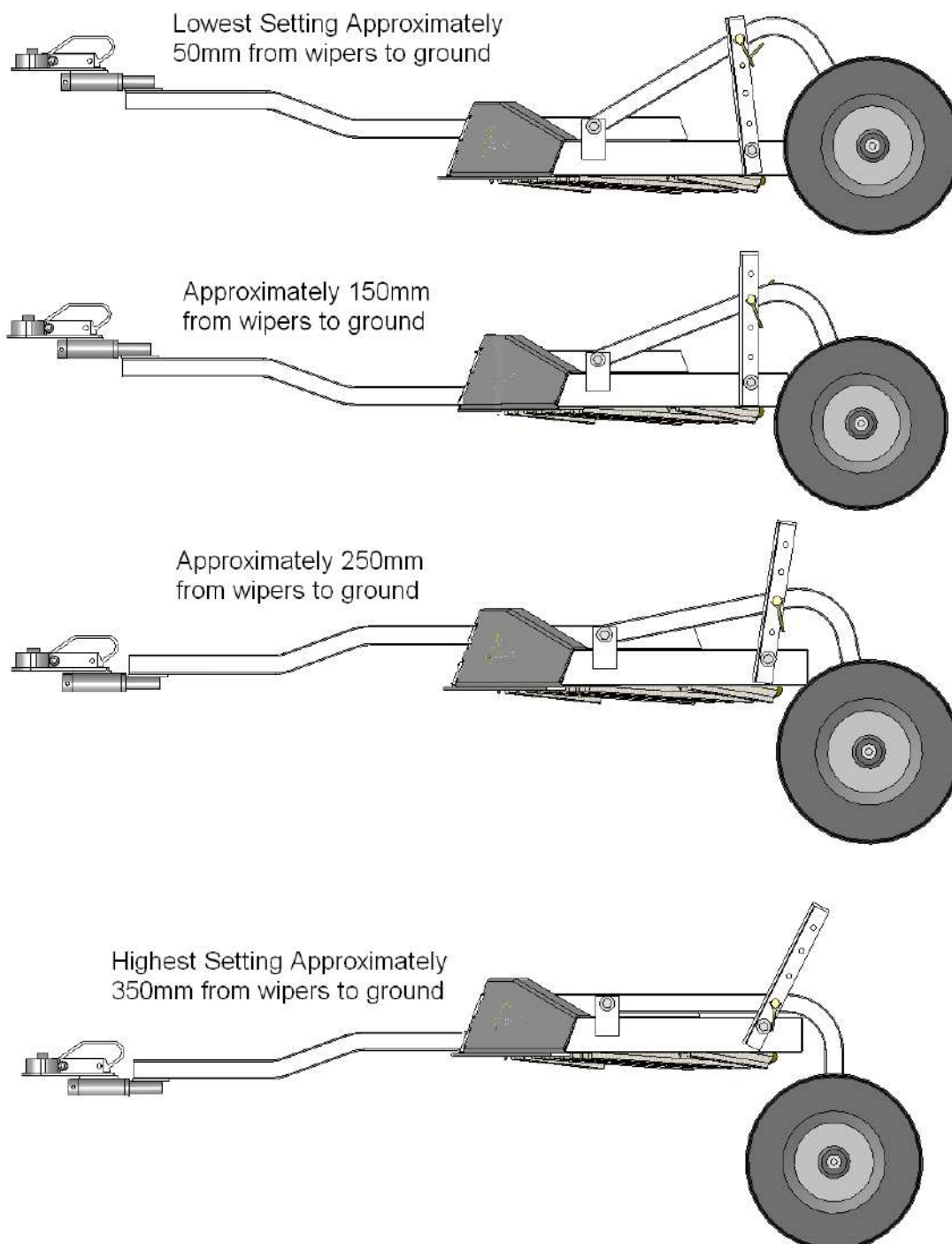
If a solution has been left standing for more than two hours stir it, or if a tank agitation system is available, turn it on.

CALIBRATION

Height Adjustment (Eliminator and Winged Eliminator)

Run the wiper over the weeds and check that the height is suitable. Set the wiper as low as possible without running the risk of causing damage to the pasture, crop or frame. Whilst the Eliminator has been designed to withstand ground strikes, it should not be set so low that ground strikes re occur. Remember, the wiper is not a bulldozer.

The eliminator has four height settings shown below. The draw bar can be inserted into one of two holes and the wheel has four adjustment holes. The swivel tow hitch also allows the draw bar to be inserted upside down.



On the Winged Eliminator unit the wings has adjustable skids to match up the height of wings to centre frame to give consistent wiping height.

ELIMINATOR TANK Pt. No 1017

INSTRUCTION LEAFLET

(Pt.No.2400-0820)

SAFETY PRECAUTIONS

This product MUST NOT be mounted on an ATV Carrier.

Use in any manner other than that recommended by the manufacturer vests sole responsibility with the operator.

Read manufacturers instructions before mixing chemicals. Always wear protective clothing when handling or using chemicals.

Description

The Yelo Eliminator Tank assembly is a 50 Litre self-contained spray tank that can be mounted directly onto the Eliminator frame. This eliminates the need for a separate spray unit. It is supplied with an electrical cable to connect to the Eliminator control unit and delivery hose to connect to the Eliminator fluid connection. The Eliminator tank assembly can be fitted to Eliminators manufactured after 1 December 1998.

Contents

Tank assembly complete with; lid, pump and wiring, suction filter, flow splitter and delivery hose. Cable Ties

Installation

Remove the four screws securing the steel cover and remove the cover.

Connect the short length of delivery hose to the tee at the centre of the Eliminator fluid line and run it between the tow bar sockets on the frame.



Place the tank on the frame and slide it forward until the lip at the front is just clear of the Eliminator shroud. Route the delivery hose under the tank but over the wipers then between the towbar sockets on the frame, connecting it to the tee at the centre of the Eliminator fluid line. Because the Eliminator is designed to operate at low pressure, hose clamps are not required.

Slide the tank fully forward to locate under the front shroud of the Eliminator.

Unwind the electrical cable and run it forward to connect with the cable from the Eliminator control unit. Secure the cable with the cable ties provided or tape.

Ensure the tank bracket is attached to the steel cover and slide the tank bracket onto the hook at the rear of the frame. Screw the cover back onto the tank and ensure that it is secure. Ensure that the hose and cable are secured so that there is only enough slack to allow access to the delivery hose under the tank. There must be no loops behind the tank to catch on foliage.

Operating Instructions

Place fluid in the tank through the strainer basket. Turn the control unit switch on. The pump will run for a period then turns off as described in the Eliminator owner's manual.

Calibration

The following table gives the nominal application rates for the settings on the control unit. The table should be used as a guide only.

Nominal Application Rates (Litres per Hectare)

Control Position	8 Kph	12 Kph
1	3	2
2	8	5
3	15	10
4	22	14
5	27	18
6	33	22
7	37	25

Maintenance

Cleaning Tank. When wiping is finished rinse the tank with clean water and pump the contents out through the wiper. A triple rinse is recommended. The tank may also be drained by removing the drain plug at the bottom of the sump.

Filter Maintenance. After each use it is recommended that the suction filter element and the flow plate filters, located under the white nuts at the pump outlet, be removed and cleaned.

Note

When replacing the flow plates and filters ensure that the check valve filter is installed in the delivery line rather than the return line to the tank.

Pressure Switch Adjustments. The pump pressure switch is factory set to 35 psi. Adjustment should not be necessary under normal operating conditions. Increasing the pressure setting will not increase pump flow but may reduce pump life.

Trouble shooting

Pump will not prime: Check that the suction filter connection is tight and sealed.
Check that the suction filter is not blocked.

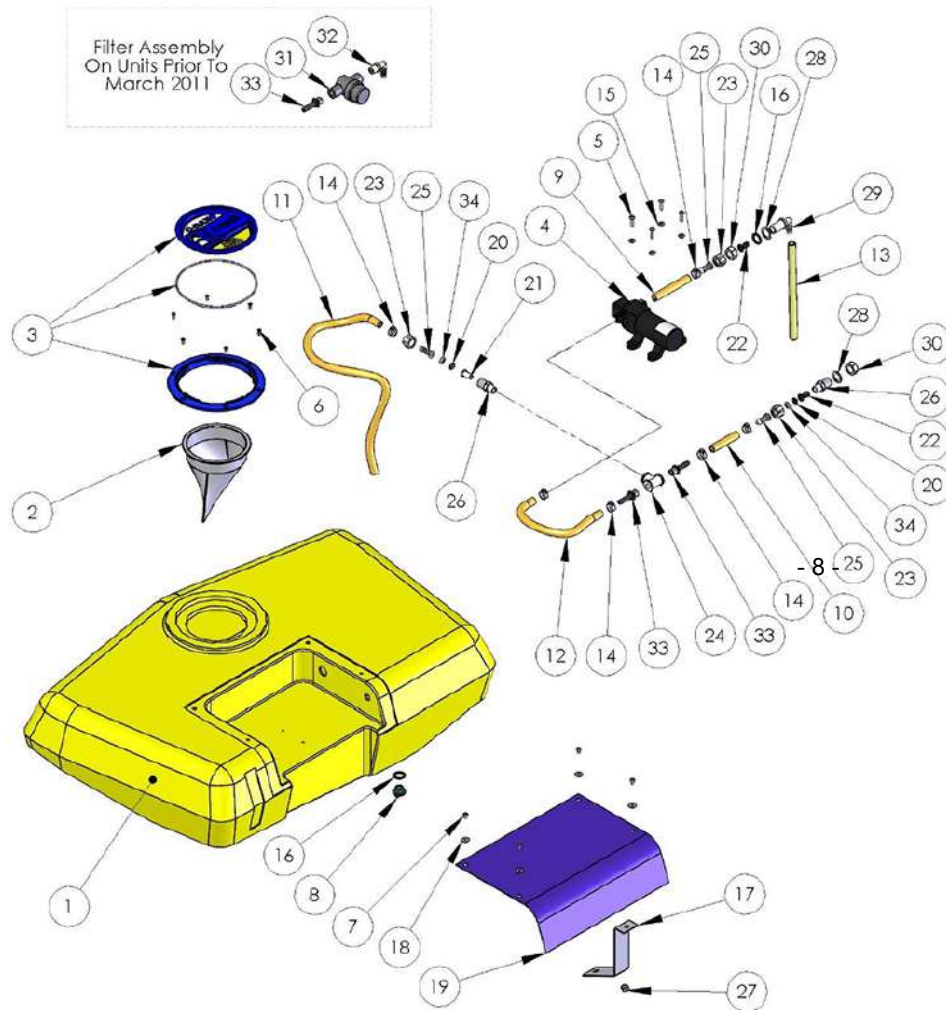
Pump pulses: Check that the flow plates and filters beneath the white nuts in the delivery and return lines are not blocked.

Pump will not run: Check electrical connections and control unit fuse.

Spare Parts

The following spare parts are stocked for the Eliminator Tank and should be ordered quoting the part number. Only parts likely to be replaced by the operator are listed. For other parts please contact your dealer.

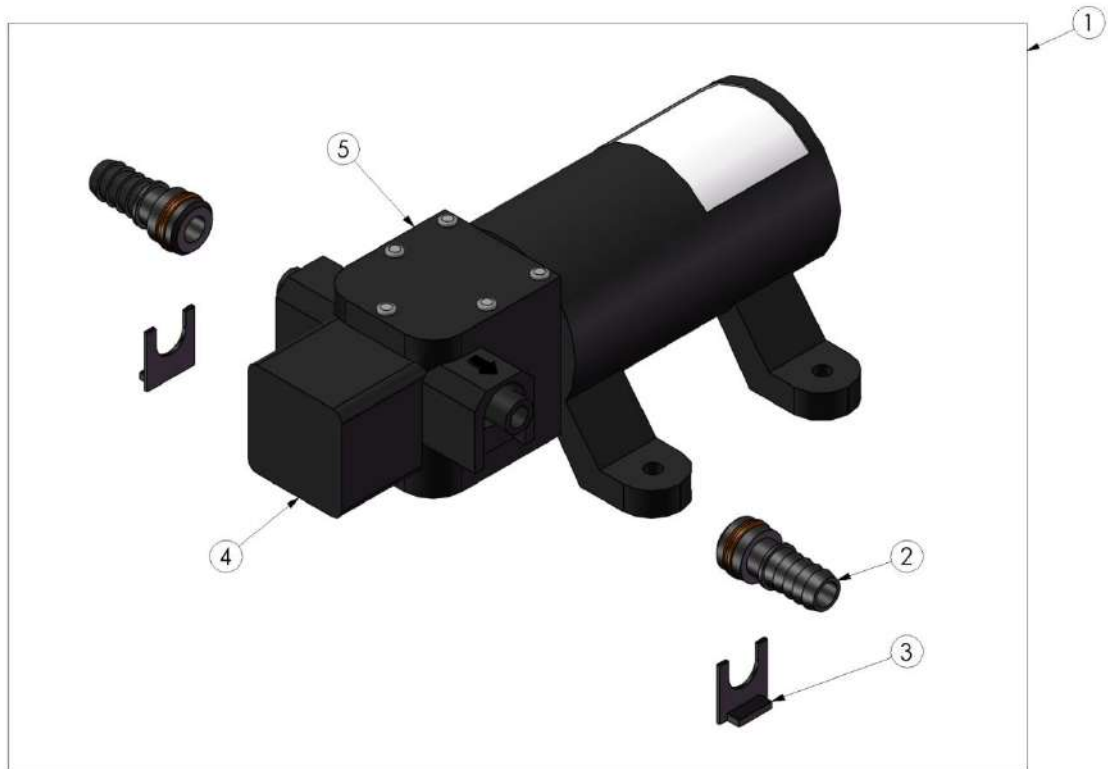
Part No.	Description	Qty Per Unit
8427-6005	Lid & Ring Assembly-D150-C-Dax Vented-Nylon	1
3400-1110	Filter-Basket-D150-Mesh	1
4100-0008	Hose-Spray-Delivery-40 Bar-8.5mm ID-Yellow	1.2M
6800-4000	Pump-Flojet-LF12-12 Volt-3.8LPM-10mm Hose Shanks	1
6800-4020	Pump-Flojet-LF12-Motor-12V	1
6800-4030	Pump-Flojet-LF12-PumpHead Complete-Threaded Ports	1
6800-4040	Pump-Flojet-LF12-Switch-Pressure-60PSI	1
3700-9130	Gasket-Washer-17x23x2-Rubber	1
6200-6260	Pipe-Fitting-Plug-Thumb Screw-3/8BSPM-Black-Plastic	1
3400-5410	Filter-Nozzle-Tip-Incl Check Valve-50Mesh-5PSI-SS Ball-Plastic	1
3400-5400	Filter-Nozzle Tip-50 Mesh-Plastic	1
5300-5100	Nozzle-Plate-Teejet-Orifice-0.063in-SS	2
6250-3001	Plug-Electrical-2 Pin-Male-20 Amp-With Cover	1
3400-5400	Filter-Nozzle Tip-50 Mesh-Plastic	1
3700-9260	Gasket-Washer-BUTYNOL-15X8X1.5-ENBSD SURFACE	2



ITEM NO.	QTY.	e9 part no	e9 description
1	1	7500-5000	Rota-Tank-Eliminator-Yellow-MDPE
2	1	3400-1110	Filter-Basket-D150-Mesh
3	1	8427-6005	Lid & Ring Assembly-D150-C-Dax Vented-Nylon
4	1	6800-4000	Pump-Flujet-LF12-12 Volt-3.8LPM-10mm Hose Shanks
5	4	3110-0520	Fastener-Machine-Screw-Pan-M5x20-Pozi-ZP
6	6	3270-8012	Fastener-Self Tap-Screw-CSK-8Gx1/2"-Pozi-Stainless
7	4	3110-0508	Fastener-Machine-Screw-Pan-M5x8-Slot-ZP
8	1	6200-6260	Pipe-Fitting-Plug-Thumb Screw-3/8BSPM-Black-Plastic
9	1	4100-0008	Hose-Spray-Delivery-40 Bar-8.5mm ID-Yellow (0.105m)
10	1	4100-0008	Hose-Spray-Delivery-40 Bar-8.5mm ID-Yellow (0.07m)
11	1	4100-0008	Hose-Spray-Delivery-40 Bar-8.5mm ID-Yellow (1.2m)
12	1	4100-0008	Hose-Spray-Delivery-40 Bar-8.5mm ID-Yellow (0.28m)
13	1	8840-8410	Tube-Translucent-10MM-100PSI (0.225m)
14	7	2000-2014	Clamp-Hose-Oetiker-Single Ear Stepless-1.4.5<>7.0mm-S/S
15	4	3310-6005	Fastener-Washer-Flat-M5-ZP
16	2	3700-9130	Gasket-Washer-17x23x2-Rubber
17	1	1300-8400	Bracket-Tank-Eliminator-ZP
18	4	3310-9210	Fastener-Washer-Flat-3/16"x7/8"x1.5-Grade 304-Stainless
19	1	2250-8300	Cover-Tank-Eliminator-PC
20	2	5300-5100	Nozzle-Plate-Teejet-Orifice-0.063in-SS
21	1	3400-5410	Filter-Nozzle-Tip-Incl Check Valve-50Mesh-5PSI-SS Ball-Plastic
22	2	3400-5400	Filter-Nozzle Tip-50 Mesh-Plastic
23	3	6200-5550	Pipe-Fitting-Nut-Swivel-11/16UNFF-Plastic
24	1	6200-9100	Pipe-Fitting-Tee-1/4BSPFx1/4BSPFx1/4BSPF-Plastic
25	3	6200-8220	Pipe-Fitting-Straight-10 Shank-Swivel-Suit Fly Nut-Plastic
26	2	6200-7380	Pipe-Fitting-Reducer-1/1/6UNCMx1/4UNFM-Straight-Plastic
27	1	3170-0008	Fastener-Nut-Nyloc-M8-ZP
28	2	3700-9150	Gasket-Washer-25x17.4x1.4-Nylon
29	1	6200-9400	Pipe-Fitting-Thru Tank-Elbow-10 Shankx1 1/16UNFM-Nylon
30	2	6200-5420	Pipe-Fitting-Nut-Back-1 1/16UNFM-Plastic
31	1	3400-2980	Filter-In Line-Hypro-50 Mesh S/S-1/2NPTM-Polpropylene
32	1	6200-2400	Pipe-Fitting-Elbow-10 Shankx1/4NPTM-Nylon
33	3	6200-9340	Pipe-Fitting-Teejet-Straight-10 Shankx1/4NPTM-Plastic
34	2	3700-9260	Gasket-Washer-BUTYNOL-15X8x1.5-ENBSD SURFACE

FLOJET LF12 REPLACEMENT PARTS

The following are the C-Dax replacement parts available for the 12V Flojet 3.8 L/Min pump



Item No.	QTY.	e9 part no	e9 description
1	1	6800-4000	Pump-Flojet-LF12-12 Volt-3.8LPM-10mm Hose Shanks
2	2	6200-3015	Pipe-Fitting-Flojet-Straight-LF12-10mm ShankxQuad Port Pump-Plastic
3	2	6800-2945	Pump-Flojet LF12-Clip-Hose Fitting-Quad Port-Sliding
4	1	6800-4040	Pump-Flojet-LF12-Switch-Pressure-35PSI
5	1	6800-4030	Pump-Flojet-LF12-PumpHead Complete inc P/Switch-Barbed Ports

These parts may be ordered through any C-Dax dealer.

TESTING

Control Panel

1. Unplug the cable assembly supplying power to the sprayer.
 2. Connect the control cable between the power cable and the sprayer.
 3. Attach the control box to the ATV using the self-adhesive Velcro pad provided.
-
1. Part fill the tank with fresh clean water.
 2. Turn on the pump using the switch on the control panel. The pump will cycle on and off, turn the control knob to '7'

CAUTION

When using the electronic control panel it is essential that the sprayer battery cable be correctly connected. If incorrect polarity is applied to the control panel the internal protection circuit will cause the fuse to blow. Repeat applications of power will eventually damage the protection circuit. If the fuse blows, check the polarity of the battery cable before replacing the fuse. **Never replace the fuse with a value higher than 10A**

3. Check that there are no leaks in the hose connections.
4. Allow the carpets to become wet until dripping. The flow rate from each carpet should be the same and should cause even wetting along the entire length of each carpet.

NOTE

When the wiper is used for the first time, it may be necessary to break the surface tension of the woollen wiper pads. Mix up some detergent and tip it over the wiper pads.

Maximum Speeds

The Eliminator can be towed at up to 15 Kph. However when wiping the following speeds have been found to be effective;

- a. Sparse infestations of easy to kill weeds (e.g. Scotch Thistle) - 12 kph.
- b. Very thick undulating infestations, (e.g. Rushes and Bracken) - 5 to 8 kph.

WARNING

Operation of the Eliminator at high speed over rough ground may damage the frame. Do not allow the Eliminator to bounce or hit fixed objects.

Setting the Flow Rate

Set the electronic control unit to mid-range for the first round. Visibly inspect the weeds and wipers after the first round. The carpets should be moist without dripping.

Use the higher number on the electronic controller for dense weed growth.

Trials have shown that the control knob on the electronic controller is not usually required to be set above '3'. Bear in mind, whilst the carpets are wet, they are applying herbicide to the target plants and doing their job.

MAINTENANCE

Flushing

Flush the tank and wiping system before storing. Set the controller to 7, or couple the pump direct to the battery lead so that the pump runs continuously.

Flush once with clean fresh water and detergent, then twice with clean water. Allow at least 4 minutes each time. During the flushing procedure, hose the carpets down with clean water to remove any dirt or other matter.

Check for even flow from all carpets.

Allow the carpets to dry out then store in a clean dry shed out of sunlight.

Wash any dust from the carpets before the next use.

Filters

After each use, remove the nuts from the tee in the hose assembly, check the strainers, and flow plates for blockages.

CAUTION

After cleaning the flow plates and strainers, ensure that the M flow plate and check valve strainer are fitted in the connection to the delivery line to the wiper, and that the #63 plate and non-check valve strainer are fitted in the bypass line to the tank. Failure to correctly install the flow plates and strainers will result in defective operation of the wiper.

Carpets

Inspect the wipers regularly and replace any that are badly worn or torn.

Frame

Inspect the bolts and tighten if loose. Never operate the wiper with loose bolts.

On Winged Eliminator units, regularly check the condition and engagement of the latch mechanisms that hold the wings in the upright position. The latches should fully engage the catches on the wings.

Wheels and Tyres

Lubricate the axles after each use and check the tyre pressures. The correct tyre pressure is 15 psi (100KPA).

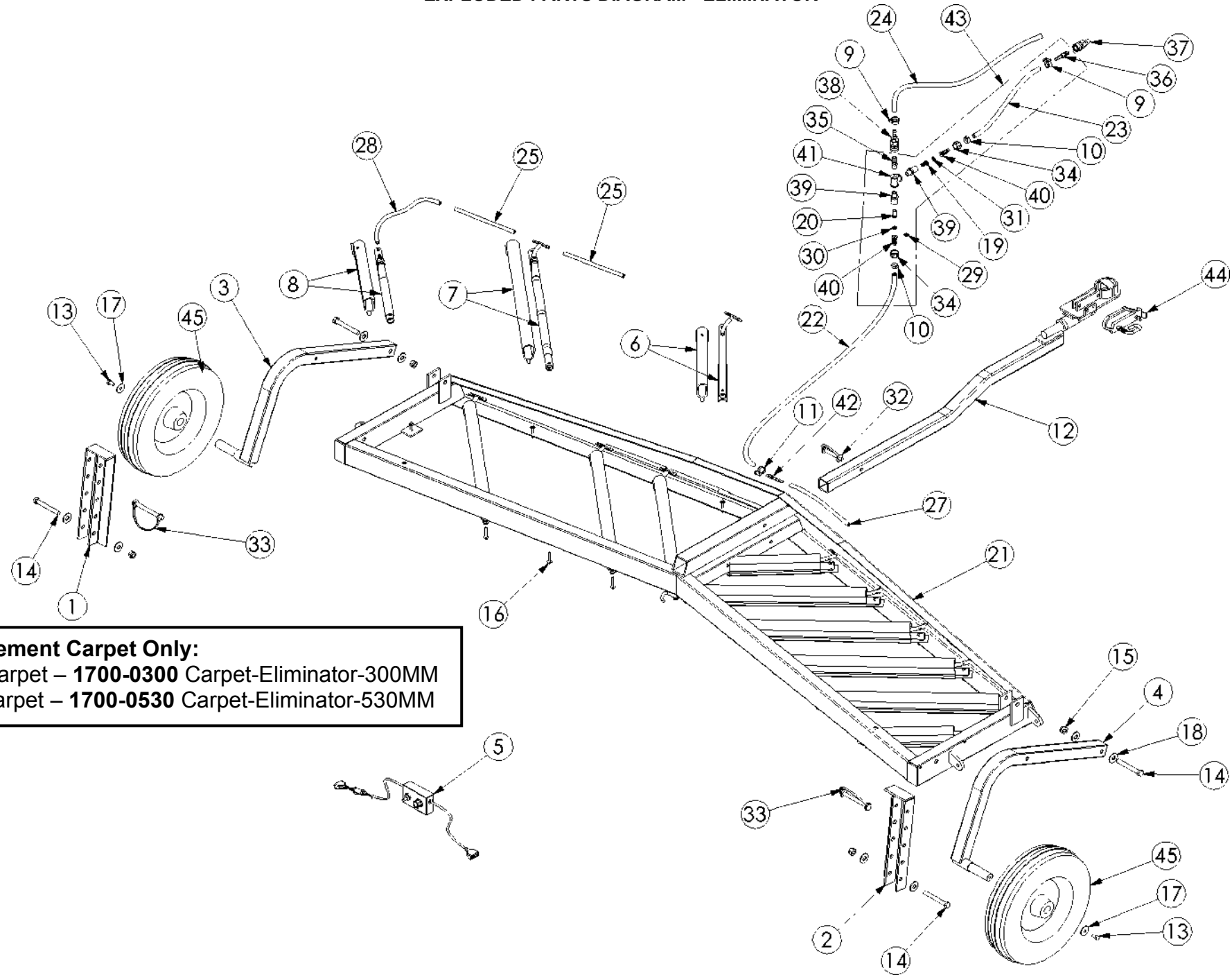
TROUBLE SHOOTING

PROBLEM	CAUSE	ACTION
Insufficient flow from ALL carpets	1. Faulty pump	Return to supplier for service
	2. Blocked suction filter	Clean
	3. Blocked flow plate or filter at check valve on hose to wiper	Clean
	4. Kinked hose	Straighten
Insufficient flow from one carpet	1. Blocked soak line under carpet	Remove carpet and check. Replace or clean
	2. Blocked hose tail connector at base of yellow carpet pipe	Flush and wash down carpets
Uneven wetting along a carpet.	1. Partial blocking of soak line under carpet.	Remove carpet and check soak line.
	2. Carpets not cleaned properly	Replace or clean Flush and wash down carpets
Too much flow from carpets	1. Pump operating for too long	Reduce pumping interval
	2. Flow plates incorrect	Check and correct
High initial flow from carpets when pump turns on	1. Blocked flow plate or filter at check valve on the by-pass hose	Clean
Pump fails to prime	1. Faulty pump	Return to supplier for service
	2. Air in suction line	Check connections for leaks
Pump fails to operate	1. Faulty Electronic controller	Return to supplier for service
	2. Faulty electrical connection	Check connections
	3. Faulty pump	Return to supplier for service
Fuse blows each time power is applied	1. Battery cable connected incorrectly	Check battery connections and reverse if required

WARNING

Do not fit a fuse with a higher rating than 10A to the Eliminator controller.

EXPLODED PARTS DIAGRAM - ELIMINATOR

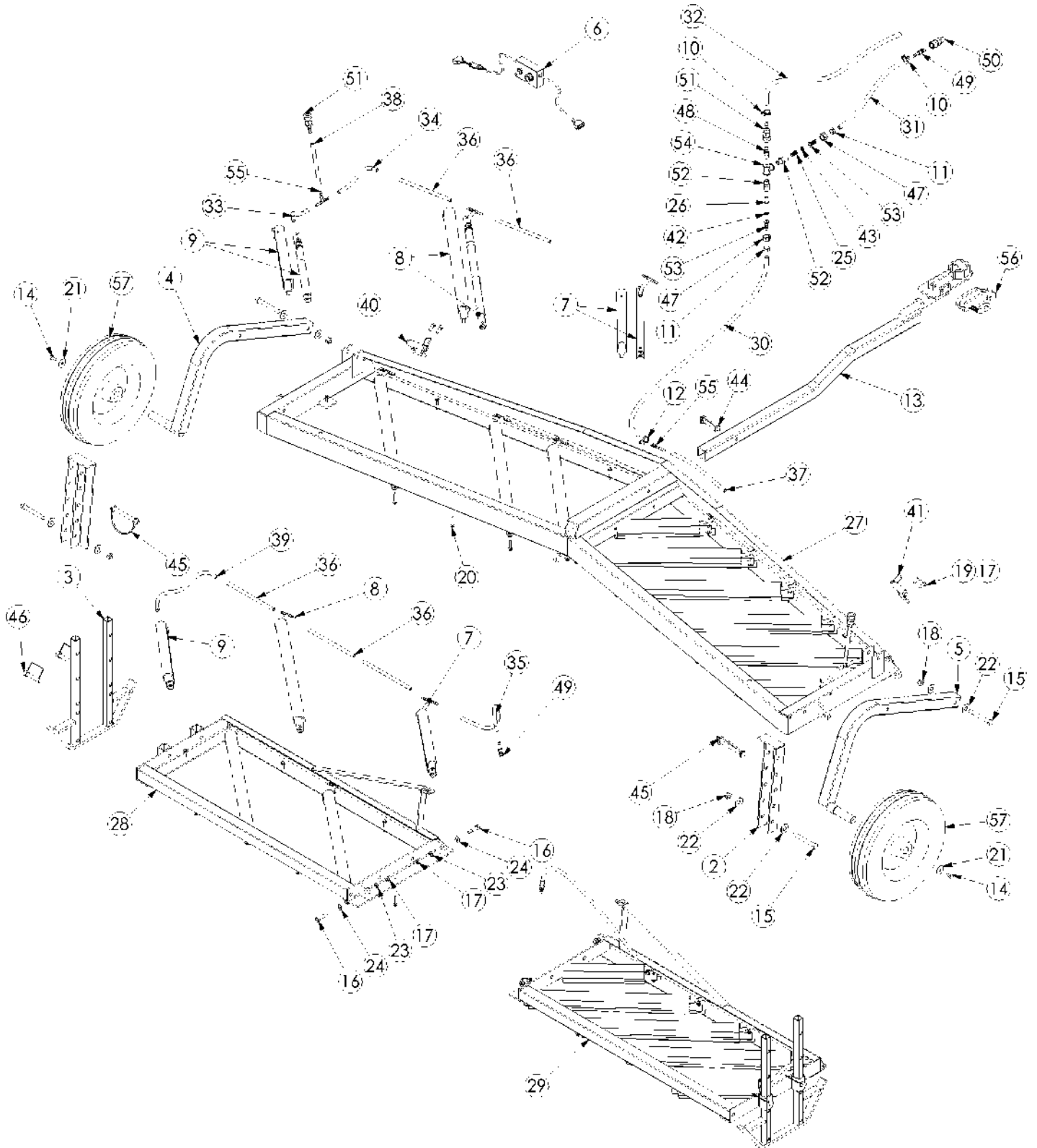


Replacement Carpet Only:
 Short Carpet – 1700-0300 Carpet-Eliminator-300MM
 Long Carpet – 1700-0530 Carpet-Eliminator-530MM

PARTS LIST - ELIMINATOR

Item No.	QTY.	part no	description
1	1	1018-3920	Adjuster-Height-Eliminator-LH-ZP
2	1	1018-3921	Adjuster-Height-Eliminator-RH-ZP
3	1	1082-2400	Axle-Eliminator G2-LH-ZP
4	1	1082-2401	Axle-Eliminator G2-RH-ZP
5	1	1500-4300	Cable-Electrical-Loom-Eliminator-Control Box
6	2	1700-1300	Carpet-Wiper Assembly-Eliminator-Inner-300mm
7	8	1700-1530	Carpet-Wiper Assembly-Eliminator-530mm
8	2	1700-2300	Carpet-Wiper Assembly-Eliminator-Outer-300mm
9	2	2000-0013	Clamp-Hose-Herbi-E-Ratchet-13.1<>15.1mm-Black-Nylon
10	2	2000-2014	Clamp-Hose-Oetiker-Single Ear Stepless-14.5<>7.0mm-S/S
11	1	2000-4008	Clamp-Hose-Worm Drive-Jubilee-8mm-Stainless
12	1	2550-2300	Drawbar-Eliminator-ZP
13	2	2840-0816	Fastener-Bolt&Nut-Hex-8.8 Grade-M8x16-ZP
14	4	2840-1290	Fastener-Bolt&Nut-Hex-8.8 Grade-M12x90-ZP
15	4	3170-0012	Fastener-Nut-Nyloc-M12-ZP
16	24	3300-6100	Fastener-Tek Screw-Hex-12Gx40-Hitek-Fully Threaded-ZP
17	2	3310-3008	Fastener-Washer-Flat-Fender-M8x32x1.5-ZP
18	8	3310-5012	Fastener-Washer-Flat-Heavy-M12x32x3-Galv
19	1	3400-5400	Filter-Nozzle Tip-50 Mesh-Plastic
20	1	3400-5410	Filter-Nozzle-Tip-Incl Check Valve-50Mesh-5PSI-SS Ball-Plastic
21	1	3500-7500	Frame-Wiper-Eliminator-Winged-GL
22	1	4100-0008	Hose-Spray-Delivery-40 Bar-8.5mm ID-Yellow
23	1	4100-0008	Hose-Spray-Delivery-40 Bar-8.5mm ID-Yellow
24	1	4100-0008	Hose-Spray-Delivery-40 Bar-8.5mm ID-Yellow
25	8	4100-1006	Hose-Spray-Delivery-7 Bar-6mm ID-PVC
26	1	4100-1006	Hose-Spray-Delivery-7 Bar-6mm ID-PVC
27	1	4100-1006	Hose-Spray-Delivery-7 Bar-6mm ID-PVC (300 Long)
28	2	4100-1006	Hose-Spray-Delivery-7 Bar-6mm ID-PVC (300 Long)
29	1	5300-4800	Nozzle-Plate-Teejet-Orifice-0.037IN-SS
30	1	5300-5000	Nozzle-Plate-Teejet-Orifice-0.055in-SS
31	1	5300-5100	Nozzle-Plate-Teejet-Orifice-0.063in-SS
32	1	6100-4780	Pin-Locking-10x57mm-ZP
33	2	6100-4800	Pin-Locking-11x100mm-ZP
34	2	6200-5550	Pipe-Fitting-Nut-Swivel-11/16UNFF-Plastic
35	1	6200-7200	Pipe-Fitting-Quick Release-Male Connectorx1/4BSPM-Brass
36	1	6200-7210	Pipe-Fitting-Quick Release-Male Connectorx8.5 Shank-Brass
37	1	6200-7240	Pipe-Fitting-Quick Release-Valve-1/4BSPM-Brass
38	1	6200-7250	Pipe-Fitting-Quick Release-Valve-Stopx8.5 Shank-Brass
39	2	6200-7380	Pipe-Fitting-Reducer-11/16UNCMx1/4UNFM-Straight-Plastic
40	2	6200-8220	Pipe-Fitting-Straight-10 Shank-Swivel-Suit Fly Nut-Plastic
41	1	6200-9100	Pipe-Fitting-Tee-1/4BSPFx1/4BSPFx1/4BSPF-Plastic
42	1	6200-9130	Pipe-Fitting-Tee-6 Shankx6 Shankx6 Shank-Plastic
43	1	8427-4200	Sub-Hose Assembly-Wiper-Eliminator
44	1	8800-3800	Tow-Coupling-Handle-Double Ended-1 7/8" x 50mm-ZP
45	2	9200-7500	Wheel-Ribbed-350x8-4 Ply-3 Ribs-BW Series

Exploded Diagram - Winged Eliminator



Parts List – Winged Eliminator

Item No.	QTY.	part no	description
1	1	1018-3920	Adjuster-Height-Eliminator-LH-ZP
2	1	1018-3921	Adjuster-Height-Eliminator-RH-ZP
3	2	1018-3940	Adjuster-Height-Eliminator WING SKID-GL
4	1	1082-2400	Axle-Eliminator G2-LH-ZP
5	1	1082-2401	Axle-Eliminator G2-RH-ZP
6	1	1500-4300	Cable-Electrical-Loom-Eliminator-Control Box
7	4	1700-1300	Carpet-Wiper Assembly-Eliminator-Inner-300mm
8	14	1700-1530	Carpet-Wiper Assembly-Eliminator-530mm
9	4	1700-2300	Carpet-Wiper Assembly-Eliminator-Outer-300mm
10	2	2000-0013	Clamp-Hose-Herbi-E-Ratchet-13.1<>15.1mm-Black-Nylon
11	2	2000-2014	Clamp-Hose-Oetiker-Single Ear Stepless-14.5<>7.0mm-S/S
12	1	2000-4008	Clamp-Hose-Worm Drive-Jubilee-8mm-Stainless
13	1	2550-2300	Drawbar-Eliminator-ZP
14	2	2840-0816	Fastener-Bolt&Nut-Hex-8.8 Grade-M8x16-ZP
15	4	2840-1290	Fastener-Bolt&Nut-Hex-8.8 Grade-M12x90-ZP
16	4	3077-1025	Fastener-Shoulder Bolt-Cap Head-Socket-M8x10x25-ZP
17	8	3170-0008	Fastener-Nut-Nyloc-M8-ZP
18	4	3170-0012	Fastener-Nut-Nyloc-M12-ZP
19	4	3290-0820	Fastener-Set Screw-Hex-8.8 Grade-M8x20-ZP
20	44	3300-6100	Fastener-Tek Screw-Hex-12Gx40-Hitek-Fully Threaded-ZP
21	2	3310-3008	Fastener-Washer-Flat-Fender-M8x32x1.5-ZP
22	8	3310-5012	Fastener-Washer-Flat-Heavy-M12x32x3-Galv
23	4	3310-6008	Fastener-Washer-Flat-M8-ZP
24	4	3310-6010	Fastener-Washer-Flat-M10-ZP
25	1	3400-5400	Filter-Nozzle Tip-50 Mesh-Plastic
26	1	3400-5410	Filter-Nozzle-Tip-Incl Check Valve-50Mesh-5PSI-SS Ball-Plastic
27	1	3500-7500	Frame-Wiper-Eliminator-Winged-GL
28	1	3500-7600	Frame-Wiper-Eliminator Wing-LH-GL
29	1	3500-7601	Frame-Wiper-Eliminator Wing-RH-GL
30	1	4100-0008	Hose-Spray-Delivery-40 Bar-8.5mm ID-Yellow
31	1	4100-0008	Hose-Spray-Delivery-40 Bar-8.5mm ID-Yellow
32	1	4100-0008	Hose-Spray-Delivery-40 Bar-8.5mm ID-Yellow
33	2	4100-1006	Hose-Spray-Delivery-7 Bar-6mm ID-Yellow
34	2	4100-1006	Hose-Spray-Delivery-7 Bar-6mm ID-Yellow
35	1	4100-1006	Hose-Spray-Delivery-7 Bar-6mm ID-Yellow
36	14	4100-1006	Hose-Spray-Delivery-7 Bar-6mm ID-PVC
37	1	4100-1006	Hose-Spray-Delivery-7 Bar-6mm ID-PVC (300 Long)
38	2	4100-1006	Hose-Spray-Delivery-7 Bar-6mm ID-PVC
39	2	4100-1006	Hose-Spray-Delivery-7 Bar-6mm ID-PVC
40	1	4680-2300	Latch-Eliminator Wing-LH-ZP
41	1	4680-2301	Latch-Eliminator Wing-RH-ZP
42	1	5300-4900	Nozzle-Plate-Teejet-Orifice-0.052in-SS
43	1	5300-5100	Nozzle-Plate-Teejet-Orifice-0.063in-SS
44	1	6100-4780	Pin-Locking-10x57mm-ZP
45	2	6100-4800	Pin-Locking-11x100mm-ZP
46	4	6100-4805	Pin-Locking-SQUARE-11x54x40mm-ZP
47	2	6200-5550	Pipe-Fitting-Nut-Swivel-11/16UNFF-Plastic
48	1	6200-7200	Pipe-Fitting-Quick Release-Male Connectorx1/4BSPM-Brass
49	3	6200-7210	Pipe-Fitting-Quick Release-Male Connectorx8.5 Shank-Brass

50	1	6200-7240	Pipe-Fitting-Quick Release-Valve-1/4BSPM-Brass
51	3	6200-7250	Pipe-Fitting-Quick Release-Valve-Stopx8.5 Shank-Brass
52	2	6200-7380	Pipe-Fitting-Reducer-11/16UNCMx1/4UNFM-Straight-Plastic
53	2	6200-8220	Pipe-Fitting-Straight-10 Shank-Swivel-Suit Fly Nut-Plastic
54	1	6200-9100	Pipe-Fitting-Tee-1/4BSPFx1/4BSPFx1/4BSPF-Plastic
55	3	6200-9130	Pipe-Fitting-Tee-6 Shankx6 Shankx6 Shank-Plastic
56	1	8800-3800	Tow-Coupling-Handle-Double Ended-1 7/8" x 50mm-ZP
57	2	9200-7500	Wheel-Ribbed-350x8-4 Ply-3 Ribs-BW Series

